

TC22 and TC27 Accessories Guide

Accessories that protect devices

Soft holsters, rugged boots, and screen protectors



Soft holster

SKU# SG-TC2L-HLSTR1-01 - Soft holster.

- Vertical orientation with open bucket design to accommodate TC22/ TC27 with optional trigger handle
- Compatible with rugged boot SKU#SG-TC2L-BOOT-01 and hand strap SKU# SG-TC2L-HSTRP1-01.



Rugged boot

SKU# SG-TC2L-BOOT-01 - Rugged protective boot.

- Boot increases drop spec of device to 5 ft. (1.5 m) and drop surface to concrete.
- Compatible with devices using Standard or Extended Capacity battery.
- Compatible with Hand Strap.



Screen protector

SKU# SG-TC2L-SCRNPT1-01 - Screen protector.

- Tempered glass.
- Includes: Alcohol wipes, cleaning cloth and instructions needed for screen protector installation.



Stylus tether

SKU# SG-TC5NGTC7NG-TETHR-03 - Stylus tether.

- Can be attached to device tower bar.
- When hand strap is used, tether should attach to hand strap SKU# SG-NGTC5TC7-HDSTP-03 directly (not to terminal towel bar).
- String type tether prevents loss of stylus.

Accessories that power devices

Single-slot cradles



Single-slot charger cradle

SKU# CRD-TC2L-BS1CO-01 - Single-slot charge-only cradle

- Charges standard capacity battery from 0 to 80% in less than 2 hours 20 minutes.
- Charges extended capacity battery from 0 to 80% in less than 3 hours 10 minutes.
- Compatible with TC22 / TC27 units with hand straps, trigger handle or protective boot when shim is removed.



Single-slot USB / Ethernet charger cradle

SKU# CRD-TC2L-SE1ET-01 - Single-slot charger and USB cradle.

- Charges standard capacity battery from 0 to 80% in less than 1 hour 20 minutes.
- Charges extended capacity battery from 0 to 80% in less than 1 hour 50 minutes.
- Compatible with TC22 / TC27 units with hand straps, trigger handle or protective boot when shim is removed.



Spare battery chargers



Single-slot device and battery charger cradle

SKU# CRD-TC2L-BS11B-01 - Single-slot charger charges a TC22/TC27 device and its spare Li-Ion battery.

- Charges Standard battery in device from 0 to 80% in less than 1 hour 20 minutes.
- Charges Extended battery in device from 0 to 80% in less than 1 hour 50 minutes.
- Compatible with TC22/TC27 units with hand strap, trigger handle, or protective boot when shim is removed.

Accessories that power devices

Multi-slot cradles



Five-slot charger cradle

SKU# CRD-TC2L-BS5CO-01 - Multi-slot cradle to charge up to five TC22 / TC27 devices.

- Charges Standard Capacity battery from 0 to 80% in less than 1 hour 20 minutes
- Charges Extended Capacity battery from 0 to 80% in less than 1 hour 50 minutes
- •Compatible with TC22 / TC27 units with hand straps, trigger handle, or protective boot when shim is removed.
- Can be rack-mounted in a standard 19-inch server rack via mounting bracket SKU# BRKT-SCRD-SMRK-01.



Five-slot charge / Ethernet cradle

SKU# CRD-TC2L-SE5ET-01 - Five-slot charge / Ethernet cradle. Charges five devices with network speeds of up to 1Gbps.

- Charges Standard Capacity battery from 0 to 80% in less than 1 hour 20 minutes.
- Charges Extended Capacity battery from 0 to 80% in less than 1 hour 50 minutes
- Compatible with TC22/TC27 units with hand straps, trigger handle, or protective boot when shim is removed.
- Can be rack-mounted in a standard 19-inch server rack via mounting bracket SKU#BRKT-SCRD-SMRK-01.



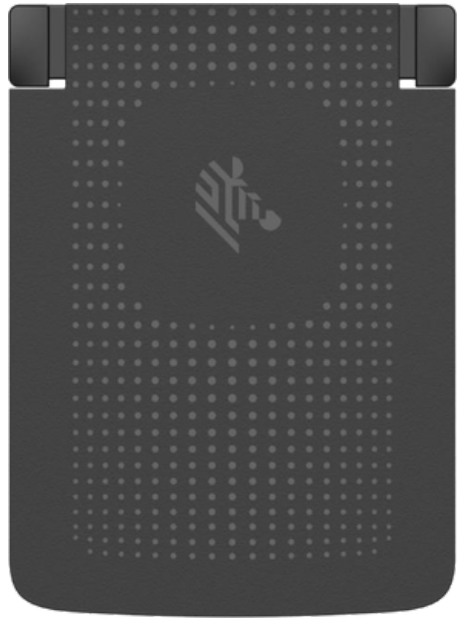
Battery Charger

SKU# SAC-TC2L-4SCHG-01 - Spare battery charger to charge any four Li-ion batteries.

- Charges Standard Capacity battery from 0 to 90% in less than 3 hours.
- Charges Extended Capacity battery from 0 to 90% in less than 4 hours..
- Can be used standalone or up to 4 chargers can be mounted on Mounting Bracket SKU#BRKT-SCRD-SMRK-01.

Accessories that power devices

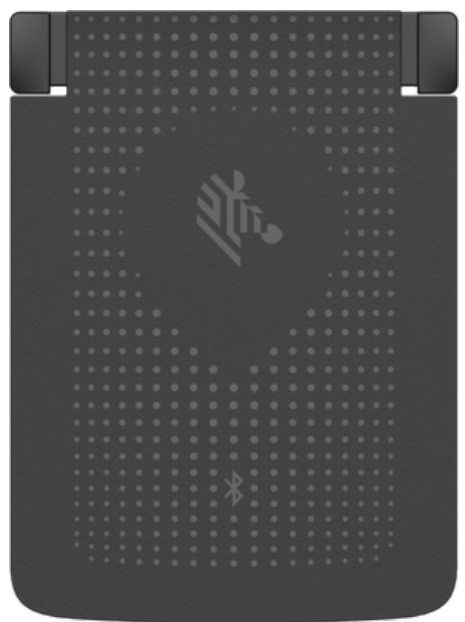
Spare Li-on batteries



Standard Li-ion Bluetooth Battery with PowerPrecision

SKU# BTRY-TC2L-2XMAXB-01 - Standard capacity 3,800mAh PowerPrecision Li-Ion Battery with BLEBeacon.

- Premium-grade battery cells with longer lifecycle and tested to meet rigorous controls and standards.
- BLE beacon allows device with this battery to be located even if powered off using Zebra Device tracker
- Sold separately: Zebra Device Tracker licenses for either 1-year SKU#SW-BLE-DT-SP-1YR or 3-years SKU# SW-BLE-DT-SP-3YR.



Standard Li-ion Battery with PowerPrecision

SKU# BTRY-TC2L-2XMAXX-01 - Standard capacity 3,800 mAh PowerPrecision Li-ion Battery.

- Premium-grade battery cells with longer lifecycle and tested to meet rigorous controls and standards.



Extended PowerPrecision Li-ion Battery

SKU# BTRY-TC2L-3XMAXX-01 - Extended capacity 5,200 mAh Power Precision Li-ion battery.

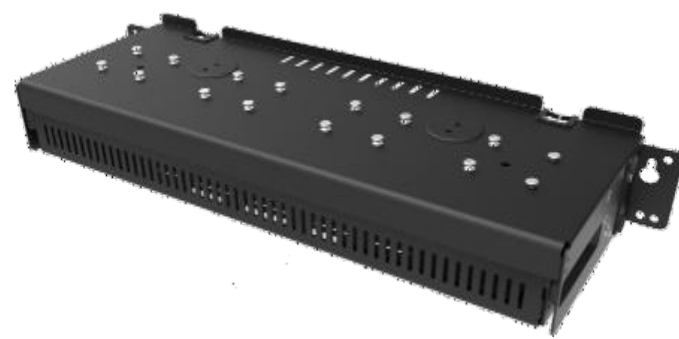
Premium-grade battery cells with longer life cycle and tested to meet rigorous controls and standards.

Accessories that power devices

Mounting options for chargers

Rack mounting for space optimisation

- Optimise available space by mounting any set of five-slot chargers for TC22/TC27 on a standard, 19-inch server rack.
- Ideal for businesses that have several devices per location.
- Compatible with all five-slot chargers for TC22/TC27.



Mounting bracket

SKU# BRKT-SCRD-SMRK-01

- Use five-slot Share Cradle mounting bracket to attach five-slot TC22/TC27 cradles to the wall or mount on a 19-inch server rack.
- Offers cable routing slots and removable tray that stores/conceals power supply.

Adjustable orientations:

- 25° angle for high-density (five-slot chargers).
- Horizontal (single-slot or four-slot spare Li-ion charger).
- Four 4-slot spare battery chargers can be mounted as shown with mounting bracket. Use to mount to wall or with standard 19-inch server rack for more density and save space.

Accessories that enable productivity solutions

Straps, hand strap, and comfort pad



Medium Velcro Strap

SKU# SG-TC2L-ARMSTRAP-01 - Arm strap – size medium.

- Replaces the Velcro strap included for SKU#SG-TC2L-ARMNT-01
- Comes in size large with strap length of 300mm or 12”



Large Velcro Strap

SKU# SG-TC2L-ARMSTRAP-02 - Arm strap – size large.

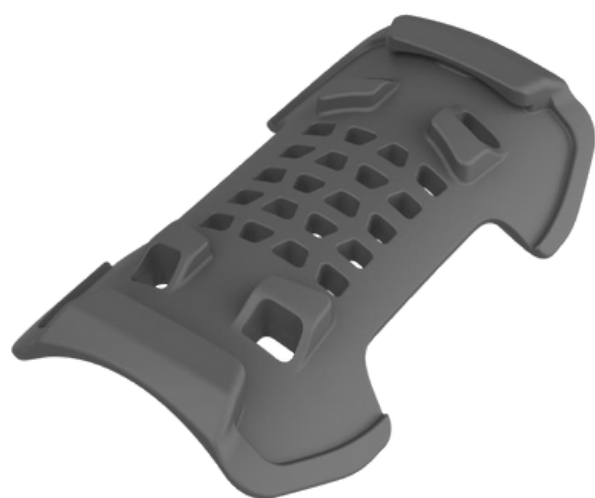
- Replaces the Velcro strap included for SKU#SG-TC2L-ARMNT-02
- Comes in size large with strap length of 330mm or 13”



Hand strap

SKU# SG-TC2L-HSTRP1-01 - Hand strap.

- Allows device to be easily held in palm of hand. Attaches directly to device, even with rugged boot installed.
- Sold separately: Rugged boot SKU# SG-TC2L-BOOT-01.



Replacement Comfort Pad

SKU# SG-TC2L-CMPD-01 - Comfort Pad for Arm Mount

- Replaces the Comfort Pad included on either SKU#SG-TC2L-ARMNT-01 or SKU# SG-TC2L-ARMNT-02 or SKU# SG-TC2L-WMADP1-02.
- Soft Rubber material.
- Easily removable and hygienic.

Accessories that enable productivity solutions

Arm / wrist mounts



Arm mount with medium size length strap

SKU# SG-TC2L-ARMNT-01 - Arm mount with medium size length strap.

- Enables the TC22/TC27 to be mounted to the arm for hands free operation and can be used with the RS5100 /RS6100 (or similar) ring scanner.
- Compatible with Standard or Extended Capacity battery.
- Not compatible with Rugged Boot.
- Includes: Medium length (30cm or 12 inches) Velcro wrist strap SKU#SG-TC2L-ARMSTRAP-01 and carrier comfort pad SKU#SG-TC2L-CMPD-01



Arm mount with large size length strap

SKU# SG-TC2L-ARMNT-02 - Arm mount with large size length strap.

- Enables the TC22/TC27 to be mounted to the arm for hands free operation and can be used with the RS5100/ RS6100 (or similar) ring scanner.
- Compatible with Standard or Extended Capacity battery.
- Not compatible with Rugged Boot.
- Includes: Large sized (33cm or 13 inches) Velcro wrist strap SKU#SG-TC2L-ARMSTRAP-02 and carrier comfort pad SKU#SG-TC2L-CMPD-01

Arm mount with extended length strap

SKU# SG-TC2L-WMADP1-02 - Wrist mount with extended BOA dial-to-fit wrist strap Swivel design

- Allows device to be viewed in portrait or landscape mode enabling hands-free functionality.
- Velcro-free design uses non-absorbent materials that can be wiped down.
- Strap length can be adjusted between 164 to 265mm
- Not compatible with Rugged Boot.
- Includes: Carrier, Comfort Pad SKU# SG-TC2L-CMPD-01 and medium/large sized wrist strap SKU#SG-NGWT-WSTPLN-01



Accessories that enable productivity solutions

Trigger handles and accessories



Electronic trigger handle

SKU# TRG-TC2L-SNP1-01 - Pistol-grip trigger handle.

- Uses electrical trigger via contacts on back side of TC22 / TC27. Trigger handle accessory offers customers the option of using the product in a gun form factor, ideal for scan-intensive operations.
- Requires rugged bootSKU#SG-TC2L-BOOT-01.
- Does not block access to rear facing camera and flash allowing camera to be used while using the trigger handle.
- Compatible with both standard and extended capacity batteries.
- Not compatible with Hand Strap,



Wrist Strap

SKU# 50-12500-066

Attaches to bottom of Snap-on Trigger Handle (SKU# TRG-TC2L-SNP1-01).

Headsets

Rugged Bluetooth and corded HD voice headsets for the most demanding industrial environments

When it comes to enabling speech-driven applications and voice communications in warehouses, manufacturing plants and outdoor yards, you need a headset that is specially designed for the job. The HS3100 Bluetooth and HS2100 corded headsets are loaded with features that offer everything you need in an industrial headset.

[Learn more about how these headsets deliver a superior voice experience.](#)



Wired headsets for voice-directed picking

HS2100 rugged wired headset

Corded HD voice headset. Can be used with TC22/TC27 devices with adapters [SKU# CBL-HS2100-3MS1-01](#) and [SKU# ADP-USBC-35MM1-01](#).

- Dustproof, spray proof, and waterproof.
- Noise cancellation for a superior voice experience in the noisiest environments.
- Swiveling boom mutes microphone allowing user to prevent voice pick applications from recognizing non-voice pick conversations.
- Feather-light for extraordinary comfort.

SKU#	Description
HS2100-OTH	HS2100 Rugged Wired Headset Over-The-Head Headband includes HS2100 Boom Module and HSX100 OTH Headband Module
HS2100-BTN-L	HS2100 Rugged Wired Headset (Behind-the-neck headband left)
HS2100-OTH-SB	HS2100 Rugged Wired Headset (Over-the-head headband) includes HS2100 Shortened Boom Module and HSX100 OTH headband module
HS2100-BTN-LSB	HS2100 Rugged Wired Headset (Behind-the-neck headband left) includes HS2100 Shortened Boom Module and HSX100 BTN headband module



Wireless headsets for voice-directed picking

HS3100 rugged Bluetooth headset

Bluetooth headset for voice-directed picking applications.

- Noise cancellation tuned for Voice-Directed Picking applications.
- Swap batteries on the fly — without losing the Bluetooth connection.
- Split-second tap-to-pair simplicity using NFC. 15 hours of battery power.

SKU#	Description
HS3100-OTH	HS3100 Bluetooth Headset Over-The-Head Headband includes HS3100 Boom Module and HSX100 OTH Headband Module
HS3100-BTN-L	HS3100 Bluetooth Headset (Behind-the-neck headband left)
HS3100-OTH-SB	HS3100 Bluetooth Headset (Over-the-head headband) includes HS3100 Shortened Boom Module and HSX100 OTH headband module
HS3100-BTN-LSB	HS3100 Bluetooth Headset (Behind-the-neck headband left) includes HS3100 Shortened Boom Module and HSX100 BTN headband module
HS3100-SBOOM-01	HS3100 Shortened Boom Module (includes microphone boom, battery and windscreen)

Cables and adapters

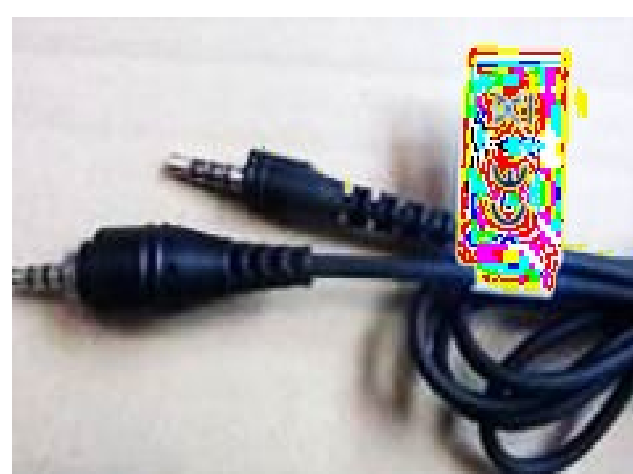


Cigarette lighter adapter plug

SKU# CHG-AUTO-USB1-01

USB cigarette lighter adapter plug.

- Used with USB C Cable [SKU# CBL-TC5X-USBC2A-01](#) (sold separately) to provide in-vehicle charging.
- Includes two USB-A ports providing higher current (5V, 2.5A) for faster charging.



HS2100 Standard cable

SKU# CBL-HS2100-3MS1-01

HS2100 headset standard cable – 3.5mm jack.

- 3.5mm barrel jack connector with cable length 43 inches or 1.1 meters.
- For use with TC22/TC27 or other devices using a 3.5mm barrel jack audio connector. Requires [SKU# ADP-USBC-35MM1-01](#).
- Rugged cable with rugged connectors that are keyed / collared for a locking failsafe connection.
- Includes one clothing clip. Additional clips can be purchased separately.



Adapter cable

SKU# ADP-USBC-35MM1-01

USB-C to 3.5mm adapter cable.

- Allows headsets with 3.5mm jack to be connected to TC22/TC27.
- Adapter provides push-to-talk (PTT) button, volume up / down buttons.
- Adapter cable length is about 2.5 feet or 78 centimeters.
- Clip on rear of adapter allows cable to be wrapped for length management
- PTT button functionality tested with headset [SKU# HDST-35MM-PTVP-02](#) where both the PTT button on the headset and the adapter may be used.

Stylus and tether



Stylus

SKU# SG-STYLUS-TCX-MTL-03

Fiber tipped stylus – pack of 3.

- Heavy-duty and made from stainless steel / brass. No plastic parts — real pen feel. Can be used in rain.
- Micro-knit, hybrid-mesh, fiber tip provides silent, smooth gliding use. 5" length.
- Big improvement over rubber tipped or plastic tipped stylus.
- Compatible with all capacitive touch screen devices.
- Tether to device or hand strap using SKU# SG-TC5NGTC7NG-TETHR-03.



Stylus tether

SKU# SG-TC5NGTC7NG-TETHR-03 - Stylus tether.

- Can be attached to device tower bar.
- When hand strap is used, tether should attach to hand strap SKU# SG-NGTC5TC7-HDSTP-03 directly (not to terminal tower bar).
- String type tether prevents loss of stylus.

Workstation Connect Cradle



TC22 and TC27 Connect Cradle

Introducing the new **Connect Cradles** (Workstation and Point of Sale) for TC22 and TC27 mobile computers. These accessories allow for the TC22 and TC27 mobile computer to connect to multiple purpose-built peripherals and enable Zebra Workstation Connect on an external monitor. The Connect Cradle offers connections for standard workstation setups (monitor, keyboard, mouse) while the point-of-sale configuration provides three additional powered USB ports for setups utilizing POS-specific peripherals such as a payment terminal, receipt printer, or scanner.

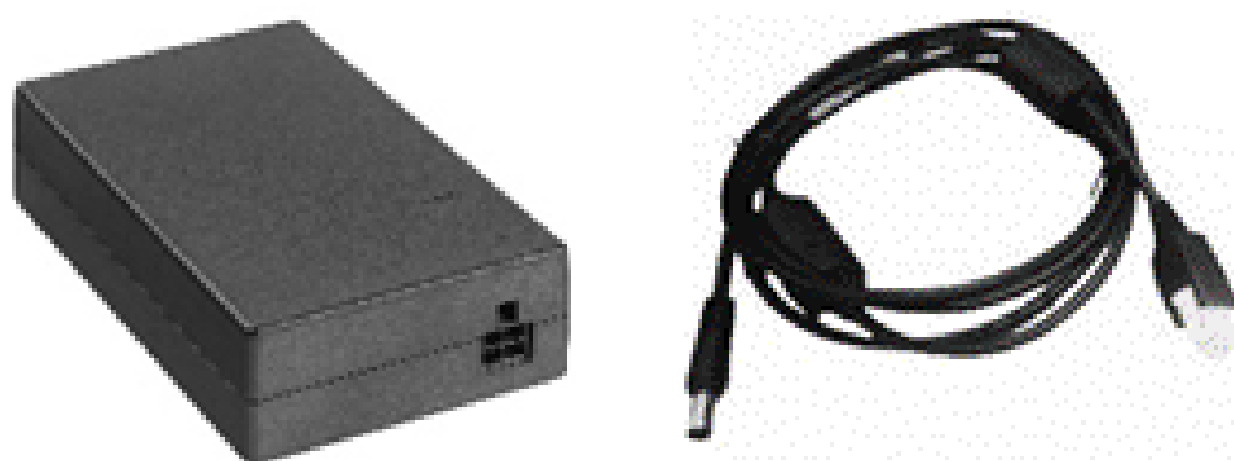


Connect Cradles

SKU# CRD-TC2L-1SNWS-01 | SKU# CRD-TC2I-1SNHP-01

Workstation | Point of Sale

- **Workstation (SKU #CRD-TC2L-1SNWS-01):** This connection allows users to use TC22 and TC27 device as a workstation or kiosk. Includes HDMI, Ethernet, USB-A (x4) ports, shims, and 3.5mm headset jack. Power supply, DC line cord and AC line cord are all sold separately.
- **Point of Sale (SKU# CRD-TC2I-1SNHP-01):** This connection allows users to use the TC22 and TC27 devices as a Point of Sale terminal. Includes HDMI, Ethernet, USB-A (x3), 24V Powered USB (x1), 12V Powered USB (x2) ports, shims, and 3.5mm headset jack. Power supply and AC line cord are all sold separately.



Power Supply & DC Line Cord

SKU# PWR-BGA12V50W0WW | SKU# CBL-DC-388A2-01

Power Supply | DC Line Cord

- **Power Supply PWR-BGA12V50W0WW** for both workstation and Point of Sale connect cradles: 100-240 VAC, 12VDC, 4.16A.
- **DC Line Cord CBL-DC-388A2-01** to be used with the power supply for Workstation connect cradle
- Country-specific AC line cord are required for both (Listed below)



Purpose-BuiltMounts

ForZebraTC22/TC27



ProClip cradles provide:

- Easy one-handed docking and undocking
- Tilt-swivel gives users an optimized viewing angle
- Channeled sidewalls guide the device into the cradle and hold the device securely
- Heavy-duty construction provides protection and longevity
- Custom design to fit the device with or without the rugged boot



Part #	Description
3PTY-PCLIP-712348	ChargingCradlewithCigaretteLighterPlugfor ZebraTC22/ TC27withRuggedBoot
3PTY-PCLIP-712347	ChargingCradlewithCigaretteLighterPlugfor Zebra TC22 / 27 (Bare Device)



Part #	Description
3PTY-PCLIP-713347	ChargingCradlewithHard-WiredPowerSupply forZebraTC22 /TC27 (BareDevice)
3PTY-PCLIP-713348	ChargingCradlewithHard-WiredPowerSupply forZebraTC22 /TC27 withRuggedBoot



Part #	Description
3PTY-PCLIP-711348	Non-ChargingCradlewithTilt-Swivelfor Zebra TC22 /27withRuggedBoot
3PTY-PCLIP-711347	Non-ChargingCradlewithTilt-Swivelfor Zebra TC22 /TC27(BareDevice)



RAM® Form-Fit Docks

for Zebra TC22 / TC27 Handheld Computers

Protect your investment and stay hands-free in the field with RAM® Mounts spring-loaded docking solutions for the new Zebra TC22 & TC27 handheld computers. These docks are available with and without power, as well as non-locking and key-locking functions. Powered dock options offer a seamless experience by utilizing the device's pogo pad docking contacts and USB Type-A connector — simply dock the device to keep it charging. Pair with any modular RAM® Mounts components to create a custom mounting solution for your forklift, truck, pick cart and more!



Zebra TC22 / TC27 RAM® Mounts Docks

PART NUMBER	KEY LOCK	USB TYPE-A POWER	FOR BOOT
3PTY-RAM-HOL-ZE24U			
3PTY-RAM-HOL-ZE24LU	•		
3PTY-RAM-HOL-ZE24PU		•	
3PTY-RAM-HOL-ZE24PLU	•	•	
3PTY-RAM-HOL-ZE24-1U			•
3PTY-RAM-HOL-ZE24L-1U	•		•
3PTY-RAM-HOL-ZE24P-1U		•	•
3PTY-RAM-HOL-ZE24PL-1U	•	•	•

COMPATIBLE HARDWARE CHARGERS



3PTY-RAM-GDS-CHARGE-V7B1U
GDS® 10-30V Hardwire Charger
w/ USB Type-A



3PTY-RAM-GDS-CHARGE-V8BU
GDS® 30-64V Hardwire Charger
w/ USB Type-A

Product Highlights



Pogo Pin Charging

Protect the charge port and increase efficiency utilizing the device's pogo pad docking contacts — simply dock the TC22/TC27 to keep the device charged. Each powered RAM® dock comes equipped with pogo pin technology for this seamless docking experience.



Removable Inserts

("-1U" Part Numbers Only)

Part numbers ending in "-1U" indicate docks that include removable inserts. When installed, these inserts retain form-fit docking of the TC22/TC27 when the rugged boot is removed from the device.



Stylus Holder

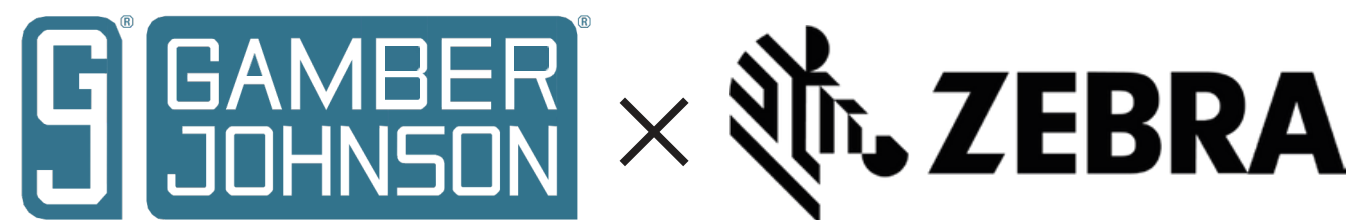
Integrated snap-in stylus holder on all docks prevent lost or dangling styluses when on-the-go.



Mount It

With RAM® Compatibility™ customize your mount to your environment. Our recommended mount is the RAM-101U Drill-Down mount.

Gamber-Johnson ZEBRA TC22/TC27 Cradles & Mounting Accessories



ZEBRA TC22/TC27 CRADLE

SKU# 3PTY-GJ-7160-1856

- Compatible with Zebra TC22/TC27 Handheld (Requires Zebra rugged boot)
- Cradle accommodates the Zebra TC22/TC27 hand strap.
- Adjustable cable restraint holds USB-C cord (not included) securely in place.
- Lightweight, small form factor designed to be resilient and reliable in harsh material handling and enterprise environments.
- Reduce costly damages by safely securing your device.
- Attaches to Gamber-Johnson mounting solutions using the AMP shoe pattern.



ZEBRA TC22/TC27 CRADLEW/ZIRKONA MEDIUM JOINER MOUNT

SKU# 3PTY-GJ-7170-1016

Combine the Zebra TC22/TC27 handheld computer cradle with our Zirkona Medium Joiner to achieve a reliable and secure mounting solution.

- Kit includes Zebra TC22/TC27 Cradle (SKU# 3PTY-GJ-7160-1586)
- Designed for lightweight mounting.
- Round plates offer AMP shoe pattern to mount cradle, and to attach to a Gamber-Johnson dash mount or other AMPS mounting options.
- Quick adjust handle to easily adjust your device for optimal visibility.
- Zirkona Medium Joiner provides all axes range of motion in X axis (left/right), Y axis (front/back) and Z axis (up/down)
- All metal construction (anodized aluminum) will not deform or degrade.



ZEBRA TC22/TC27 CRADLEW/ZIRKONA MEDIUM JOINER + SUCTION CUP MOUNT

SKU# 3PTY-GJ-7170-1017

Mount with confidence using the small suction cup from Zirkona. Combine the Zebra TC22/TC27 handheld computer cradle with our Zirkona medium joiner to achieve a reliable and secure mounting solution.

- Kit includes Zebra TC22/TC27 Cradle (SKU# 3PTY-GJ-7160-1586)
- Designed for lightweight mounting.
- Quick adjust handle to easily adjust your device for optimal visibility.
- Zirkona Medium Joiner provides all axes range of motion in X axis (left/right), Y axis (front/back) and Z axis (up/down)
- Small suction cup footprint of 3.5" creates a strong yet small mounting solution.
- Long handle provides ease of use when suctioning.
- Tackys surface on material helps with positioning your mount.