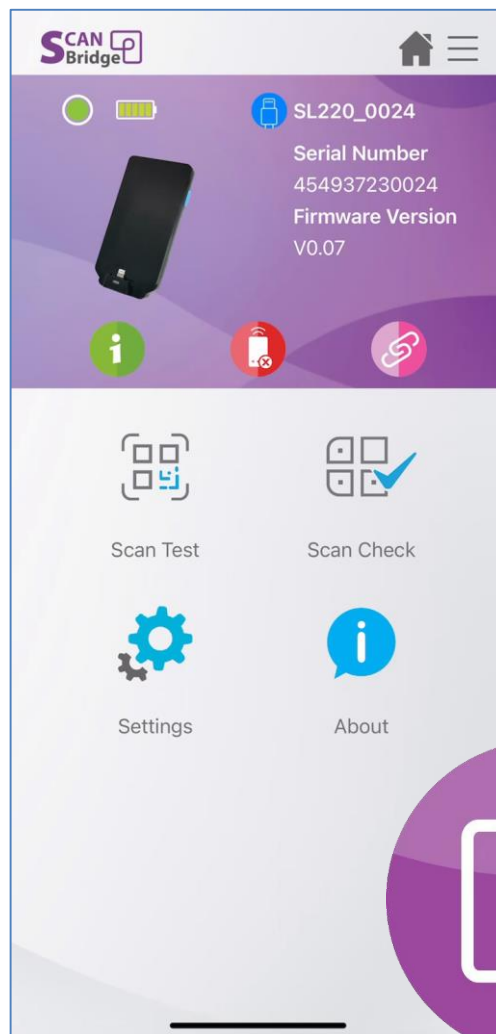


ScanBridge iOS

Version 1.0



User's Manual

Revision History

Date	Issue	Change Description
2023/12/15	1	First Published Version (ScanBridge iOS 1.0.0)

Note: Dates are expressed in YYYY/MM/DD

Preface

About This Manual

This manual is intended for users of the **ScanBridge iOS** Version 1.0-series in iOS operation system (iOS 13 or above).

Hereafter in this manual the term “**ScanBridge iOS**” may simply be referred to as just “**ScanBridge**”.

ScanBridge consists of following main features:

- Quick configuration on Unitech barcode scanner.
- Powerful editing tool for user to manage the data output to suit different working situation.
- Providing 2 types of Data wedge methods (Copy & Paste, Keyboard emulation).
- Scan Test helps user verify scanned data and output result
- Scan Check provides different modes for user to compare/verify scanned barcode.
- Device management including syncing device settings, profiles sharing and in-app firmware update.
- **ScanBridge Keyboard** that allows user to trigger scan with virtual button.
- Support battery hot swap.

Note: **ScanBridge Keyboard** require the user to configured before using.

To configure:

Settings → General → Keyboard Keyboards → Add New Keyboard → ScanBridge → Allow Full Access

Worldwide Support

unitech's professional support team is available to quickly answer questions or assist with technical-related issues. Should an equipment problem occur, please contact the nearest unitech regional service representative.

For complete contact information please visit the Web sites listed below:


Taipei, Taiwan – Headquarters	Europe
Tel: +886-2-89121122 E-mail: info@hq.ute.com Address: 5F, No. 136, Lane 235, Baoqiao Road, Xindian District, New Taipei City 231, Taiwan (R.O.C.) Website: http://www.ute.com	Tel: +31-13-4609292 E-mail: info@eu.ute.com Address: Kapitein Hatterasstraat 19, 5015 BB, Tilburg, the Netherlands Website: http://eu.ute.com
China	Japan
Tel: +86-59-2310-9966 E-mail: info@cn.ute.com Address: Room401C, 4F, RIHUA International Mansion, Xinfeng 3rd Road, Huoju Hi-tech District, Xiamen, Fujan , China Website: http://cn.ute.com	Tel: +81-3-35232766 E-mail: info@jp.ute.com Address: Kayabacho Nagaoka Building 8F.,1-5-19 Shinkawa, Chuo-Ku, Tokyo, 104-0033, Japan Website: http://jp.ute.com
Asia & Pacific / Middle East	Latin America
Tel: +886-2-27911556 E-mail: info@apac.ute.com info@india.ute.com info@mideast.ute.com Address: 4F., No. 236, ShinHu 2nd Rd., NeiHu Chiu, 114, Taipei,Taiwan Website: http://apac.ute.com / http://mideast.ute.com	Tel: +52-55-5171-0528 E-mail: info@latin.ute.com Address: 17171 Park Row, Suite 210 Houston, TX 77084USA (Rep.) Website: http://latin.ute.com
North America	Please scan QR Code to visit us :
Tel: +1-714-8916400 E-mail: info@us.ute.com / info@can.ute.com Address: 6182 Katella Ave, Cypress, CA 90630, USA Website: http://us.ute.com	

Table of Contents

Preface	i
Worldwide Support	ii
Chapter 1 - Introduction	1
1.1 Supported Models	1
1.2 Supported Language	1
Chapter 2 – Feature Highlights	2
Chapter 3 – Initial Setting & Introduction	4
3.1 Initial Setting.....	4
3.1.1 Allow Full Access to ScanBridge Keyboard	5
3.1.2 Set “ScanBridge Keyboard”	7
3.2 Homepage Introduction	8
3.3 Menu Introduction.....	9
Chapter 4 – Activate/Deactivating	10
4.1 Activate a scanner.....	10
4.2 Deactivate Scanner.....	11
Chapter 5 – Scanner Information & Configuration	12
5.1 Display Scanner Information	12
5.2 Scanner Configuration.....	15
Chapter 6 – Profile Repository & Data Output/Editing	20
6.1 Profile Repository	20
6.2 Data Outputting	21
6.3 Data Editing.....	22
Chapter 7 – Scan Test / Scan Check	28
7.1 Scan Test.....	28
7.2 Scan Check – Single Check.....	30
7.3 Scan Check – Multi Check	32
7.4 Scan Check – Filter Rule.....	34

Chapter 8 – ScanBridge Keyboard	38
8.1 Data Wedge Setting	38
8.2 ScanBridge Keyboard	39
8.2.1 ScanBridge Keyboard Details	40
Chapter 9 – Others	42
9.1 Password Setting	42
9.2 Battery Hot Swap	45
9.3 Import/ Export/ Reset	46
Chapter 10 – Q&A	48
10.1 SL220	48
Appendix	50

Chapter 1 - Introduction

ScanBridge is a powerful **iOS application** designed to streamline the connection and configuration of supported Unitech iOS Scanners (**hereinafter called “scanner”**) for users. It efficiently transmits scanned data to the user's designated applications. Moreover, the application allows users to customize the scanned data as needed before transmission.

1.1 Supported Models

ScanBridge iOS supports the following Unitech Scanner:

ScanBridge iOS Version	Supported Device Models and Firmware Requirements
V1.0.0	● SL220 V1.0.0

1.2 Supported Language

ScanBridge iOS supports the following languages:

English, Japanese, Traditional Chinese, and Simplified Chinese.

Chapter 2 – Feature Highlights

The key features of ScanBridge are:

- **Display scanner info**
 - Show scanner information, including scanner name, serial number, firmware version, battery power status.

- **Scanner configuration**
 - User is able to customize the scanner configuration depends on the working environment.
 - User is able to customize the scanner reading barcode configuration by barcode types

- **Data Wedge with Data output editing**
 - Provide Copy & Paste, Keyboard Emulation methods to work with different applications.
 - User is able to create basic/advanced rule to edit scanned data before outputting data. Rules including inserting, replacing, switch cases and applying stamps or regular expression.
 - Rules can be created under different profiles for various working situation. Each rules can be specific target for different barcode type.

- **Scan Test**
 - User is able to perform scan test on the rules created to verify the editing outcome, but also to verify scanned results.

- **Scan Check**
 - Provide 3 methods (Single Check, Multi Check, Filter Rule) of checking, to help user to compare between barcodes. Furthermore, user create look up table or regular expression to with the filter check to identify barcodes.

- **Firmware Update**
 - Support updating firmware version for scanner within ScanBridge,

without the hassle to connect to other devices.

- **Battery Hot Swap**
 - Keep the connection alive when device is swapping battery.

- **ScanBridge Keyboard**
 - Convert read data received from scanner as iOS keyboard output.
Besides, this function can run as service, user can output the data to any text field in any app but not only in ScanBridge.
Additionally, ScanBridge support outputting the data as copy & paste, key emulation.

Chapter 3 – Initial Setting & Introduction

In this chapter, three parts will be introduced:

1. Initial Setting
2. Homepage Introduction
3. Menu Introduction

3.1 Initial Setting

Due to security considerations within the iOS system, ScanBridge Keyboard requires user permission to enable all its functionalities

The steps of setting are:

1. Allow Full Access to ScanBridge Keyboard
2. Set “ScanBridge Keyboard”

3.1.1 Allow Full Access to ScanBridge Keyboard

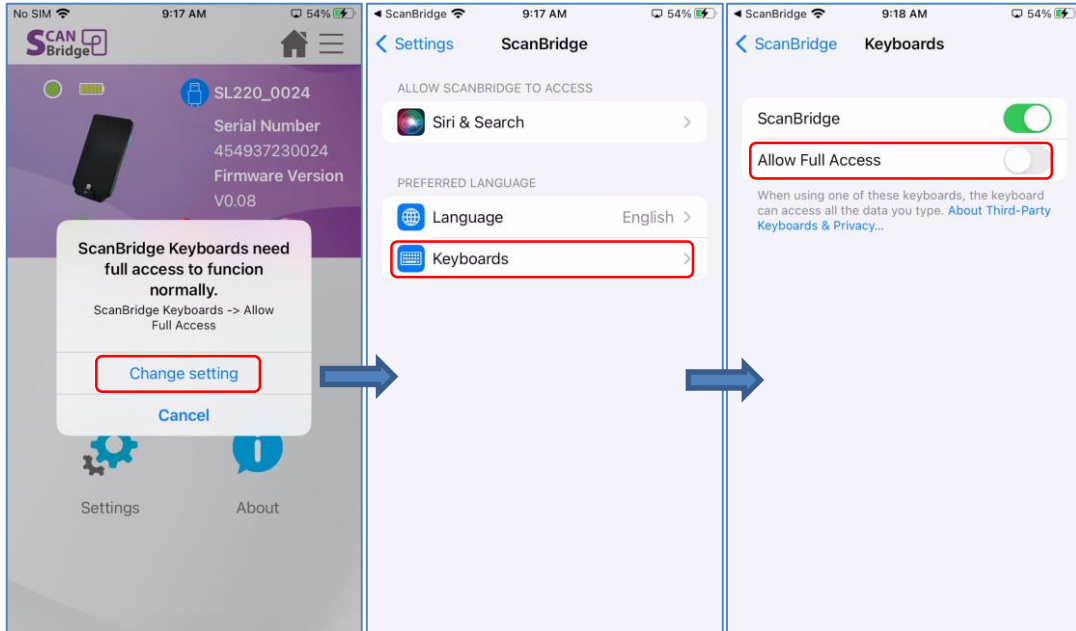


Figure 3.1.1.1

Figure 3.1.1.2

Figure 3.1.1.3

In iOS system, system requires user to allow full access to turn enable third party keyboard. Once ScanBridge is launched, ScanBridge will guide user to allow full access to ScanBridge Keyboard.

1. Tap on “Change setting” in Figure 3.1.1.1.
2. Tap on “Keyboards” in Figure 3.1.1.2
3. Enable on “Allow Full Access” in Figure 3.1.1.3
4. Tap on “Allow” in Figure 3.1.1.4

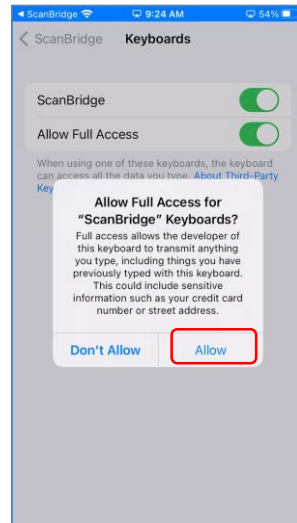


Figure 3.1.1.4

3.1.2 Set “ScanBridge Keyboard”

ScanBridge keyboard is a customized keyboard created by Unitech for operating with data wedge. By using ScanBridge keyboard, user can use as general keyboard, but also trigger the scan in more convenient way. This keyboard is required to be activate if you wish to use the Data Wedge function to your enterprise application.

*Using “Notes” as enterprise app using in work environment for the example

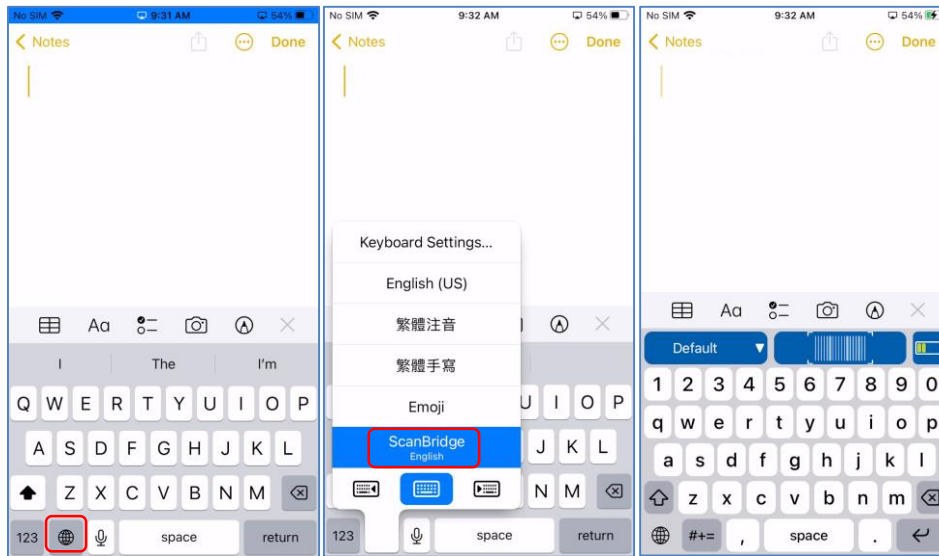


Figure 3.1.2.1

Figure 3.1.2.2

Figure 3.1.2.3

Follow the steps below

1. Tap on Switch Keyboard icon as shown in Figure 3.1.2.1
2. Select on “ScanBridge Keyboard”.as shown in Figure 3.1.2.2
3. As long as setting up successfully, the default keyboard turns into ScanBridge keyboard (see keyboard in Figure 3.1.2.3).

3.2 Homepage Introduction

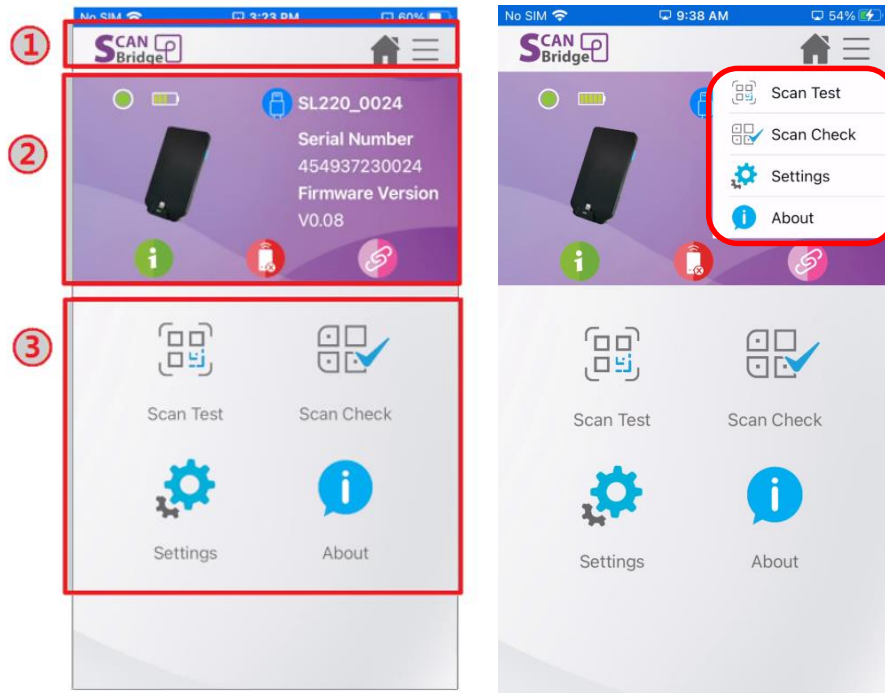


Figure 3.2.1

Figure 3.2.2

In ScanBridge (when paired), there are three main parts in homepage (Figure 3.2.1):

1. Navigation bar - home button and menu button
2. Device info bar - status of scanner
3. Main functions - Features entry

As, shown in the left screenshot in Figure 3.2.2, contents in “Main functions” part is as same as menu (in the right screenshot), so that user is able to switch to specified function without going back to homepage.

3.3 Menu Introduction

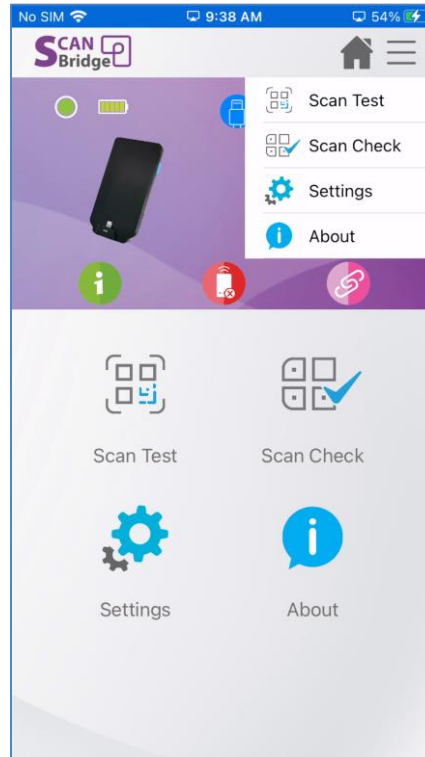


Figure 3.3.1

In menu, there are 4 major modules and introduced in Table 3.3.1:

Module name	Module function
Scan Test	Perform scans and check results.
Scan Check	Check scanned results.
Settings	To configure app or scanner.
About	To show copyright and version.

Table 3.3.1

Chapter 4 – Activate/Deactivating

4.1 Activate a scanner

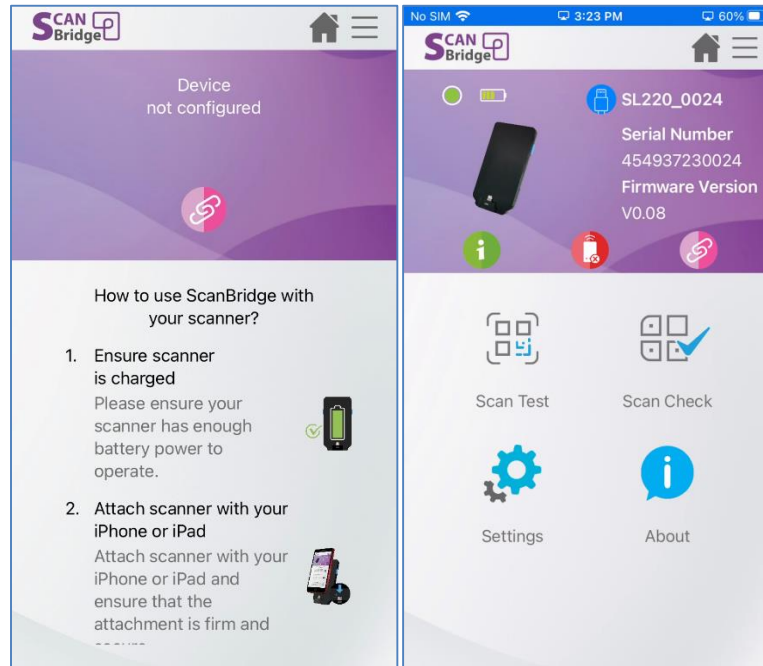



Figure 4.1.1

Once scanner has plugin the connecting adapter to the iOS device, ScanBridge will request user to launch ScanBridge application. When ScanBridge is launched, plugged device will be automatic activated*. (As shown in Figure 4.4.1)

*Note: The auto activation behavior only applies for model SL220.

4.2 Deactivate Scanner

If wish to deactivate connected scanner, there are 3 methods:

- Simply remove plugged scanner.
- Tap on  to deactivate scanner.
- ScanBridge also provide a device manage panel to deactivate device: “Deactivate” button in Figure 4.2.1.

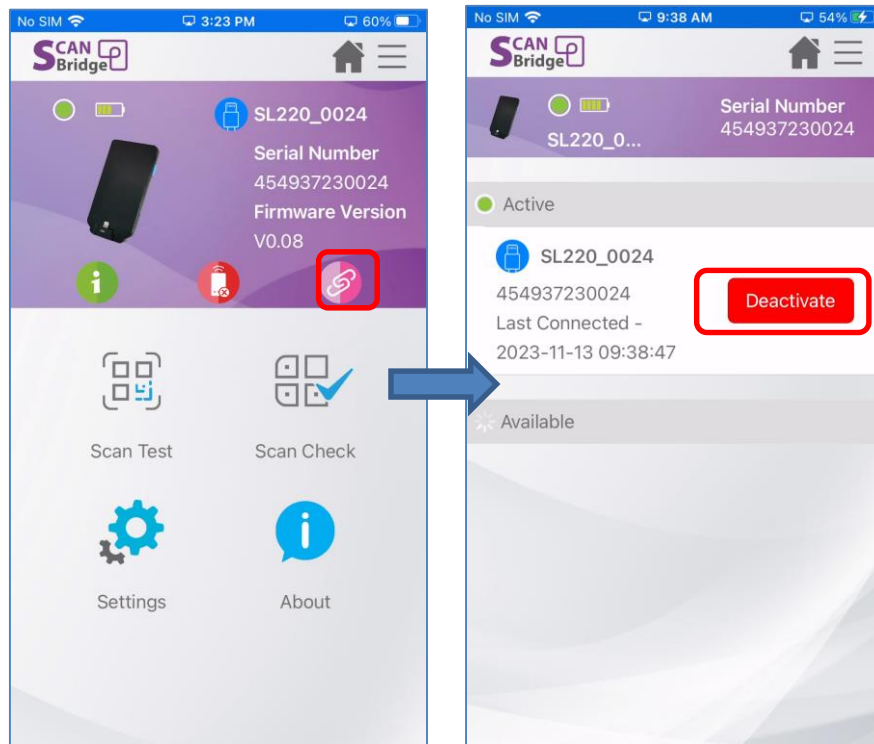


Figure 4.2.1

Chapter 5 – Scanner Information & Configuration

When the devices are activated, ScanBridge is able to interact with scanner. In this chapter, there are two parts to be introduced:

1. Display scanner information
2. Scanner configuration

5.1 Display Scanner Information

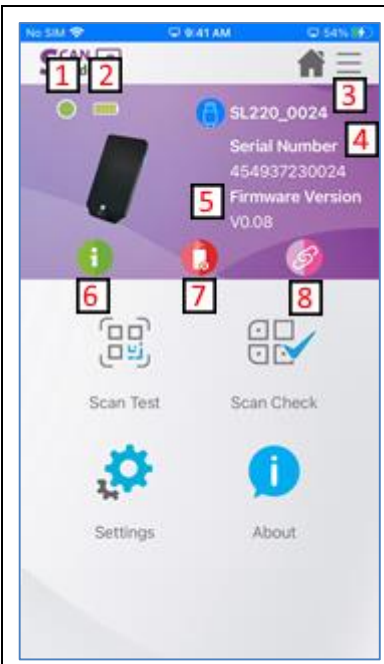
	<p>1: Connection Status (Green: Connected. Red: Disconnected)</p> <p>2: Battery Level</p> <p>3: Device Name</p> <p>4: Serial Number</p> <p>5: Firmware Version</p> <p>6: Detail: the “i” icon shows the detail of the reader.</p> <p>7: Deactivate: To unpair and deactivate the scanner.</p> <p>8: Devices: To navigate to devices management.</p>
--	---

Table 5.1.1

The scanner info includes the current status of the scanner, refer to Table 5.1.1. Moreover, user can click the green info icon to check detail information.

The ‘i’ detail will show a more detailed info shown in Table 5.1.2



Detail 	
	1. Device Name
	2. Serial Number
	3. Engine Model
	4. Battery Status
	5. Firmware

Table 5.1.2

By default, ScanBridge will automatically activate the plugged in device. User is also able to manage it through Device management page (Table 5.1.3).


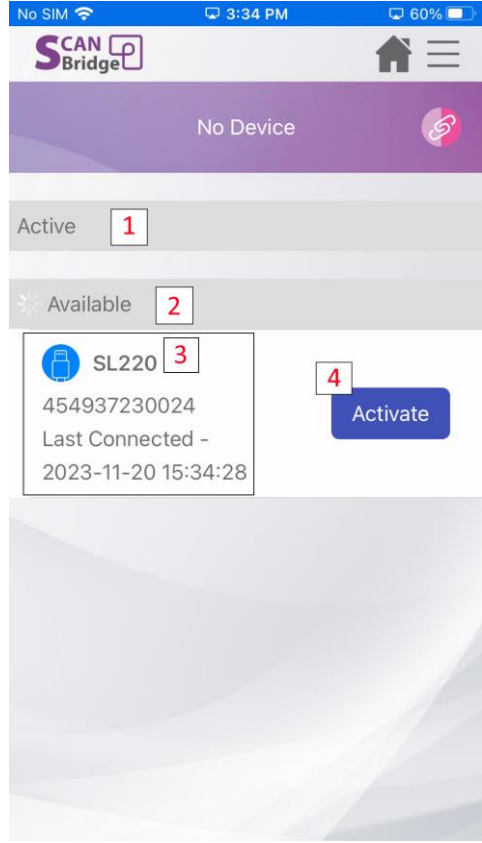
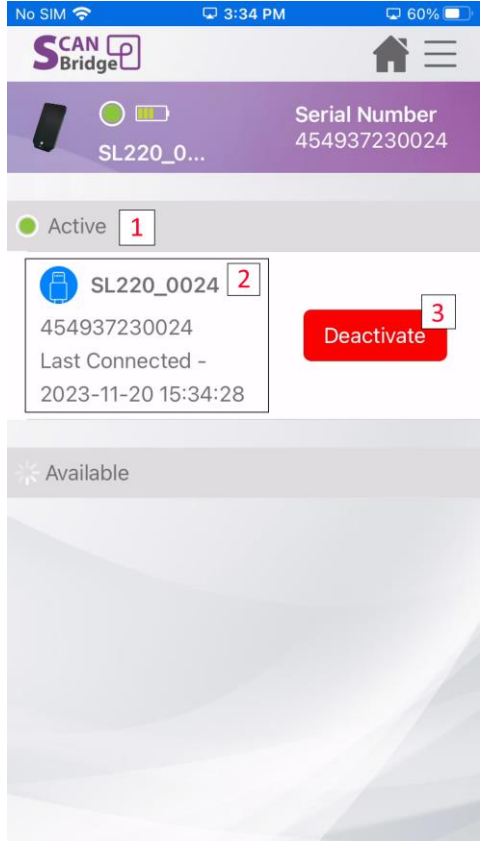
Device Management 	
	
<ol style="list-style-type: none"> 1. List of devices that are currently activated 2. List of devices that can be activate 3. Device info (Device name/Serial Number/Last connect time) 4. Activate the device 	<ol style="list-style-type: none"> 1. List of devices that are currently activated 2. Device info (Device name/Serial Number/Last connect time) 3. Deactivate current device

Table 5.1.3

5.2 Scanner Configuration

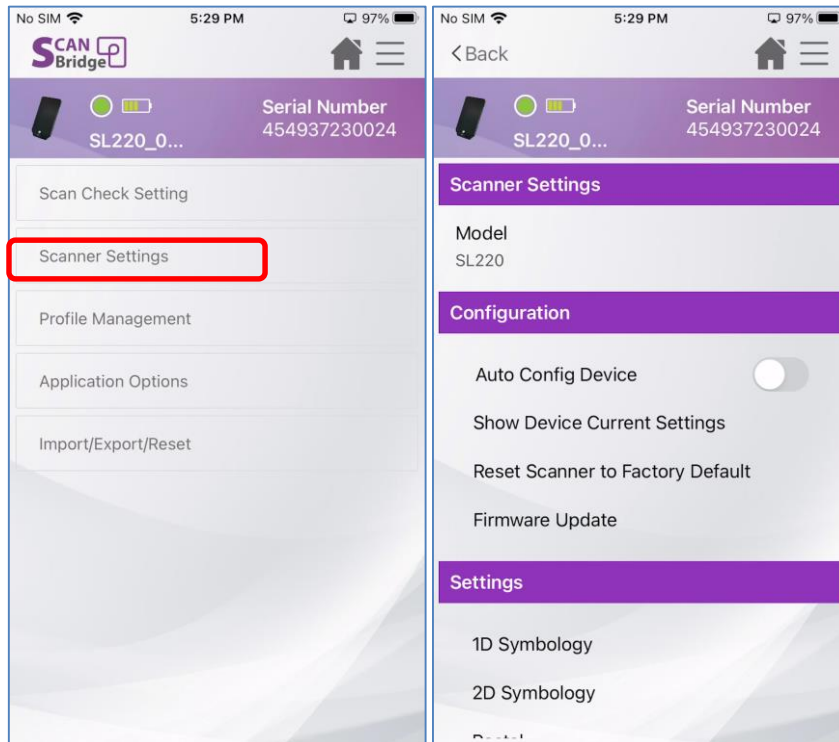


Figure 5.2.1

Under this setting page, user will be able to configure scanner settings and manage scanner.

Without connecting to a scanner, user is still being able to configure scanner settings. However, to sync the setting to a scanner when plugged in. It is required user to enable “Auto Config Device” setting in “Scanner Settings”, which will automatically apply the settings to the scanner when connected (See Auto Config Device).

- **Auto Config Device**

This will overwrite scanner settings configured on ScanBridge to the scanner connected. It is very useful when user need to setup multiple devices. With this feature on, user will only need to setup once on ScanBridge, and then connect with other scanners.

- **Show Device Current Settings**

This feature allow user to perform a compare between the settings on application and the settings on connected device.

Note: It is important to disable Auto Config Device if user wanted to see what are the differences, else the scanner settings will always be the same between ScanBridge settings and the scanner.

- **Reset Scanner to Factory Default (Only when device connected)**

Reset connected scanner settings to factory default

- **Firmware Update (Figure 5.2.2)**

1. Initiate a firmware update on the scanner, which can only occur when the scanner is connected to a sufficiently charged device.
2. ScanBridge will display the current firmware version on the scanner. Upon user confirmation on the version, proceed by selecting the firmware file using the 'Select File' button.
3. Ensure to review the file name and important notes thoroughly. Upon confirming all details, initiate the upload by tapping 'Confirm & Go.'
4. Upon reaching 100% completion of the upload, the scanner will disconnect to perform the update, and automatically reconnect once the update process is finished.

Note: Please visit ute.com to download firmware files

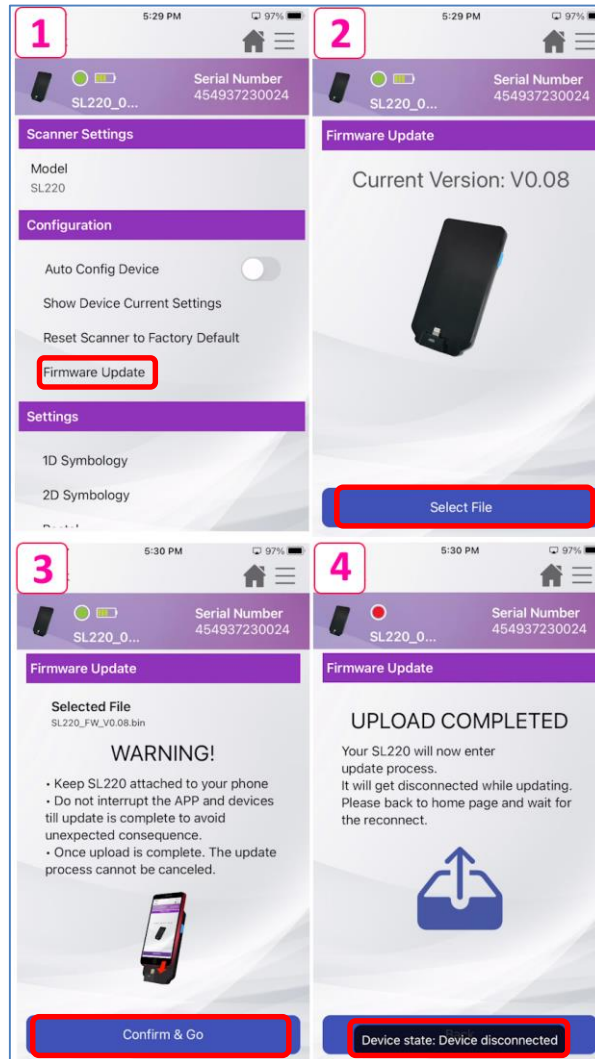
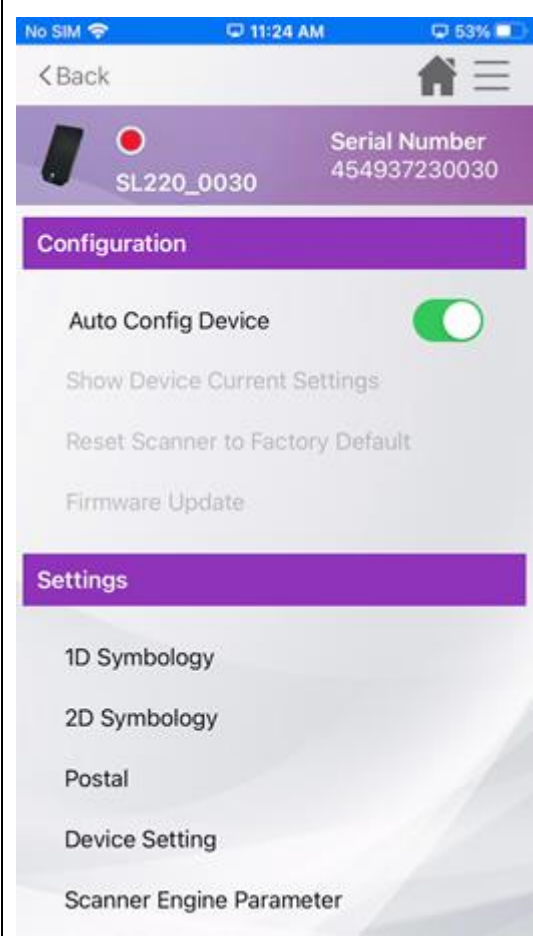


Figure 5.2.2

● **Available Scan Settings**

Settings that will allow user to modify scanner behavior when scan to specific symbologies. Refer to table for the supported symbologies.

	Model: SL220
	1D Symbologies
	<ul style="list-style-type: none"> ● Codebar ● Code 39 ● Inrerleaved 2 of 5 ● FEBRABAN

	<ul style="list-style-type: none"> ● NEC 2 OF 5 ● Code 93 ● Staight 2 of 5 ● Matrix 2 of 5 ● Code 11 ● Code 128 ● Telepen ● UPC/EAN/JAN ● MSI ● GS1 DataBar ● Label Code ● Composite ● Digimarc
	<p>2D Symbologies</p> <ul style="list-style-type: none"> ● PDF417 ● Macro PDF417 ● Micro PDF417 ● QR code ● DotCodes ● Data Matrix ● Grid Matrix ● Maxi Code ● Aztec Code ● Han Xin
	<p>Postal Code</p> <ul style="list-style-type: none"> ● Two Dimensional Postal Codes ● Australian Post ● China Post ● Korea Post
	<p>Device Settings</p> <ul style="list-style-type: none"> ● Trigger Key Status

	<ul style="list-style-type: none"> ● Data Terminator ● Setting By Label ● GS1 AI ● Beeper Volume ● LED Control ● Scanner Indicator
	Scanner Engine Parameter
	<ul style="list-style-type: none"> ● Picklist Mode ● Decode Aiming Pattern ● Decoding Illumination

Table 5.2.3

Chapter 6 – Profile Repository & Data Output/Editing

6.1 Profile Repository

A Profile contains editing rules that apply to scanned data. (as shown in Figure 6.1). These profiles can be created for different environments, user can choose from to insert, replace, switch cases, or validate/substitution with regular expression to scanned data before outputting.

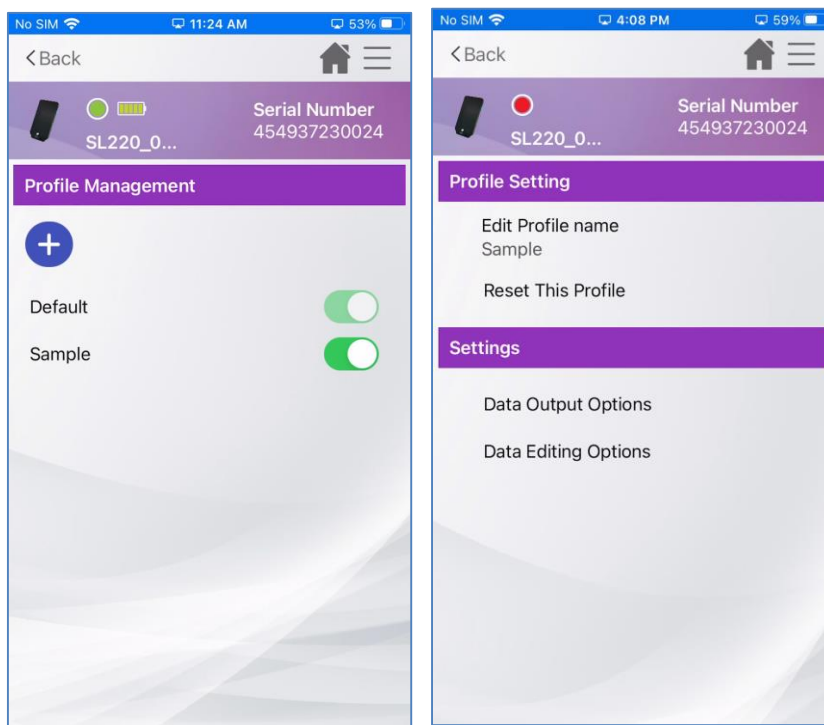


Figure 6.1

Profile Repository:

- 1 User can create profiles for different scenes individually with different mode. In each profile, user is able to set its own **Output Options** and **Data Editing Options** (See details in Chapter 6.2)
- 2 User have 2 ways to switch between profiles to apply:
 - a. Scan Test – Applied Profile (See details in Chapter 7)

- b. ScanBridge Keyboard – Profile list (See details in Chapter 8)

6.2 Data Outputting

Under each profile repository, user can configure data output methods, and scanner behavior on read.

ScanBridge provide below options in Data Output Options (Figure 6.2.1)

- Enable Data Wedge

This will allow ScanBridge to process scanned data, and user can enable this feature to use with ScanBridge Keyboard (See details in Chapter 8)

- Beep on Read
 - Will beep sound when scanner complete a scan
- Vibrate on Read
 - Will vibrate when scanner complete a scan.

ScanBridge provide 3 kinds of data outputting methods, user also able to set the duration between each output:

- Key Emulation
 - Simulate input data by typing keyboard, useful in some environment where copy & paste does not work, and require some delay between each character
- Copy & Paste
 - Copy the data, and paste to enterprise application

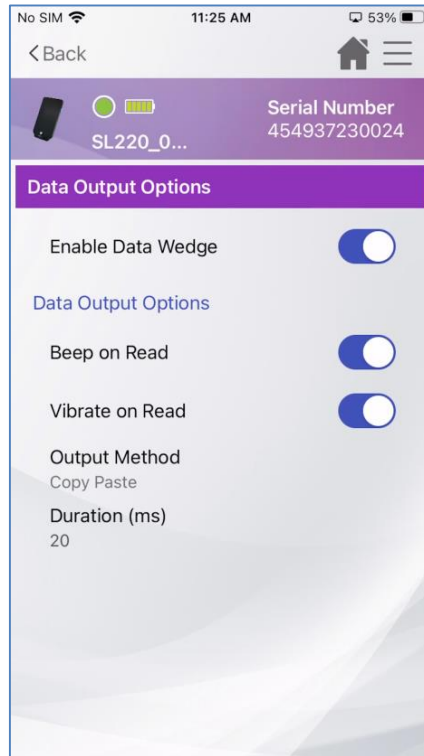


Figure 6.2.1

Note: Enable Data Wedge must be on for ScanBridge Keyboard to output data to application

6.3 Data Editing

Scan Bridge provide Basic (Figure 6.3.1) and Advanced Data Editing; each profile repository can choose to apply between Basic or Advanced Data Editing.

Basic Data Editing:

For the basic data editing options, please refer to Table 6.3.1.

Item	Description
Time Stamp	Time Stamp formatting
Prefix	Insert content at beginning of the scanned data
Suffix	Insert content at end of the scanned data

Terminator	Insert data terminator at the end of the scanned data
Data Replace	Find specific data, and then replace by desired content

Table 6.3.1

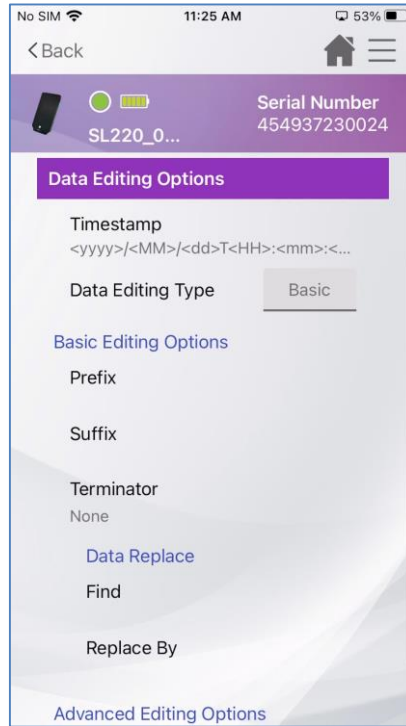


Figure 6.3.1

Advanced Data Editing:

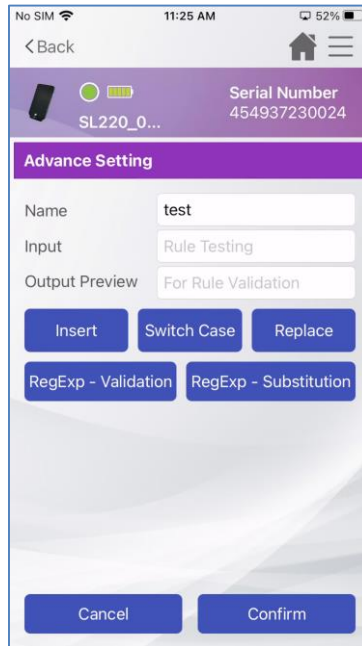


Figure 6.3.1

Advanced data editing (Figure 6.3.1) provided more power options for user to setup. To enable advanced Data Editing mode will require user to change

Data Editing Type to Advanced Data Editing Type Advanced, then tap on “Advanced Editing Options” (Figure 6.3.2). In the following page you will be able to create rules for specific symbology (Figure 6.3.3). Then created symbology rule will be applied when scanned match symbology, else it will apply Default rule.

Note: Each profile or rules can be enable/disable individually

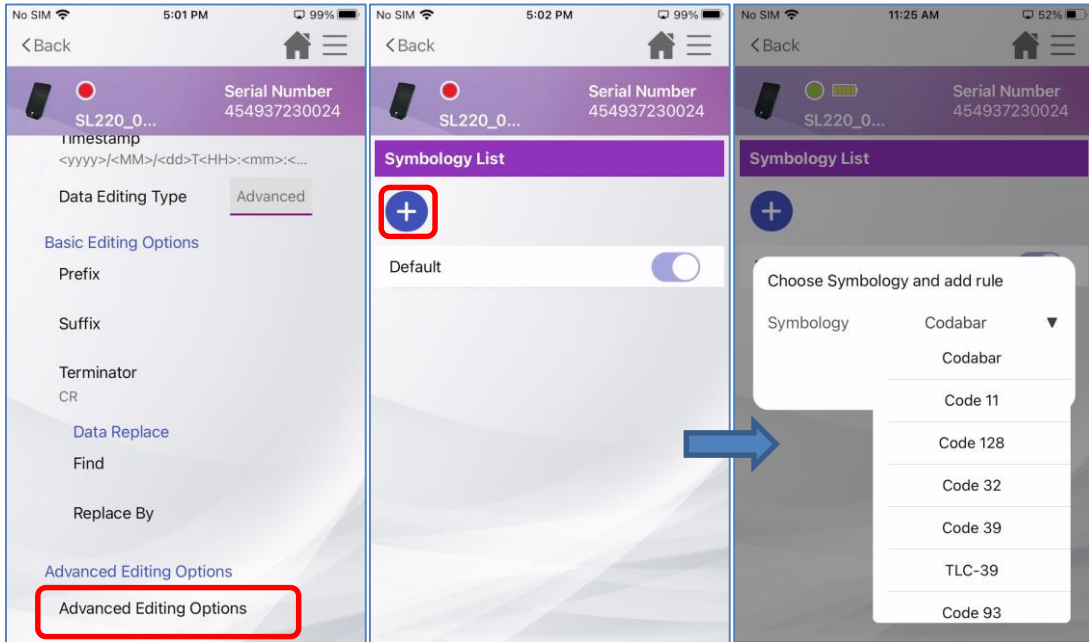


Figure 6.3.2

Figure 6.3.3

Advanced Data Editing Settings

User can create as many as needed actions under a symbology rule, the rules can be freely enabled and disabled in a profile. It is support to preview the outcome while editing. Please see item explained in Table 6.3.2

	1: Name of the profile
	2: Input test data
	3: Result after applied ules
	4: Insert data
	5: Switch between cases
	6: Replace data
	7: Validate data with regular expression
	8: Substitution data with regular expression
	9: Rule card with info
	10: On/Off of the rule
	11: Cancel editing profile

	<p>12: Confirm the profile</p> <p>Notes:</p> <ul style="list-style-type: none"> ● ScanBridge will apply the enabled rules from top to bottom. ● Rule card can be dragged to change order
--	--

Table 6.3.2

Following are the options explanations for advance setting (Table 6.3.3).

Item	Description
Insert	Insert content to scanned data; by defining starting index
Switch Case	Switch lower or upper cases to scanned data; by defining starting index and the length will be replaced.
Replace	Replace content to scanned data; by defining starting index and the length will be replaced.
Regular Expression – Validation	<ul style="list-style-type: none"> ■ Find matched data with regular, then user will have following options to create own combination: <ul style="list-style-type: none"> ◆ If valid failed, then <ul style="list-style-type: none"> ● Stop apply the rest of the rules ● Keep apply the rest of the rules ◆ And return <ul style="list-style-type: none"> ● Processing Data

	<ul style="list-style-type: none">● Empty String
Regular Expression – Substitution	Find matched data with regular expression and replace with content set

Table 6.3.3

See Appendix (Table 1.1 and 1.2) for editing option example.

Chapter 7 – Scan Test / Scan Check

ScanBridge provide a playground for user to perform scan test, user will be able to see scanned result in ScanBridge. Moreover, user can apply profiles (Created from Chapter 6) to see the data output result.

7.1 Scan Test

Before user start working on enterprise application, user is able to run some quick test on scanned result or profile configured.

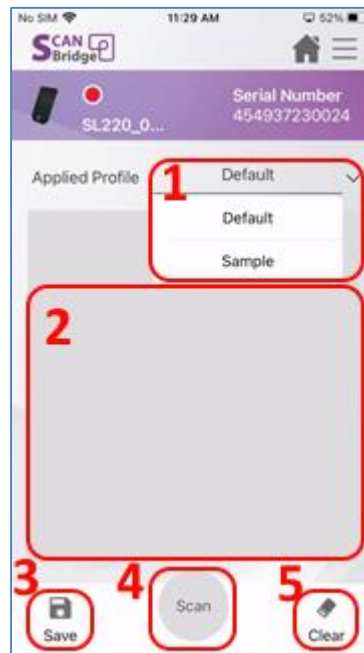


Figure 7.1.1

The number of tags in Figure 7.1.1 is corresponding to the number in Table 7.1.1.

Tag	Tag name	Description
-----	----------	-------------

1	Selected Profile	The profile will be applied to scanned data
2	Result field	The output data will be shown here
3	Save	Export scanned result
4	Scan	Virtual button to trigger scan
5	Clear	Clear current result

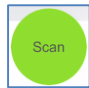
Table 7.1.1

By default, the “Default” profile will be selected. Tap on the profile file will be able to select the profile from the dropdown list.

To start scan, user can perform the scan in 2 methods:

- Press and hold the blue color trigger key on the scanner.



- Press the  Scan button on the ScanBridge app screen (Scanner must be connected else shows gray).

The scanned result will be shown on the ScanBridge app screen.

7.2 Scan Check – Single Check

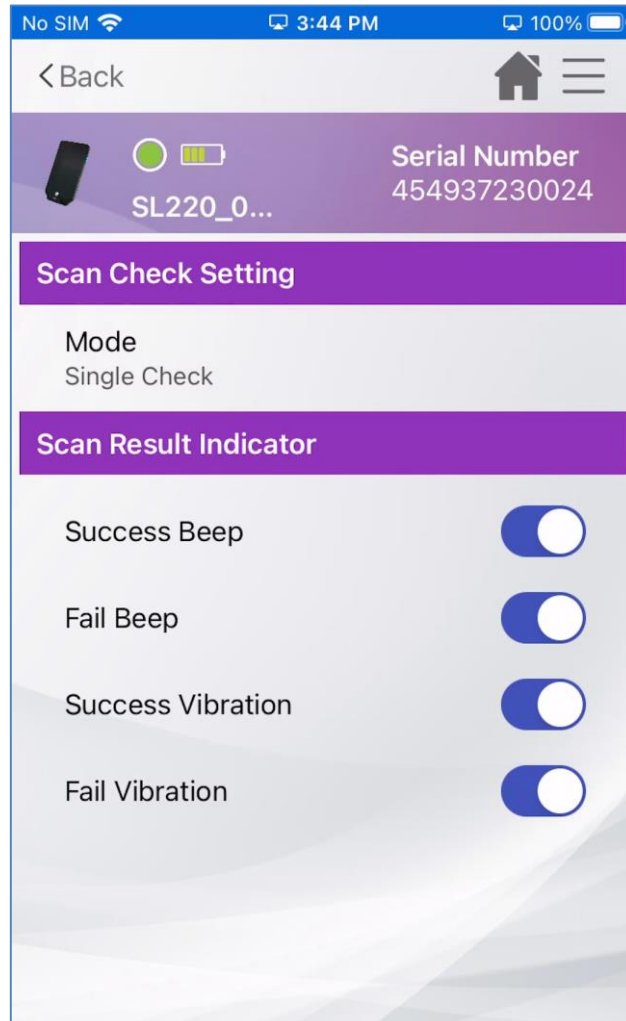
ScanBridge provide utility for user to perform checks between barcodes. Single Check – Single Check will **compare between a reference barcode to another barcode** (Figure 7.2.1). It will show correct match, if the barcodes are identical (Figure 7.2.2), else it will then show false (Figure 7.2.3).



Addition Single Check Setting can be config through Scan Check Setting (Figure 7.2.4)

User is able to set scan result indicator with following:

- Success Beep
Beep when the read is success
- Fail Beep
Beep when the read is fail
- Success Vibration
Vibrate when the read is success
- Fail Vibration
Vibrate when the read is fail



7.2.4

7.3 Scan Check – Multi Check

ScanBridge provide utility for user to perform checks between barcodes. Single Check – Multi Check will **compare a reference barcode to multiple barcodes** (Figure 7.3.1). It will show correct match, if the barcodes are identical, else it will then show false (Figure 7.3.2).

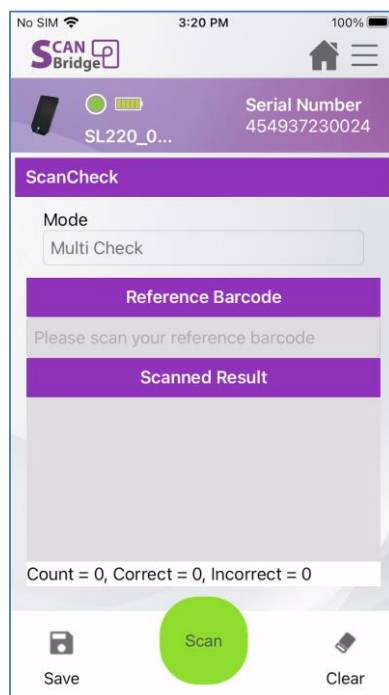


Figure 7.3.1

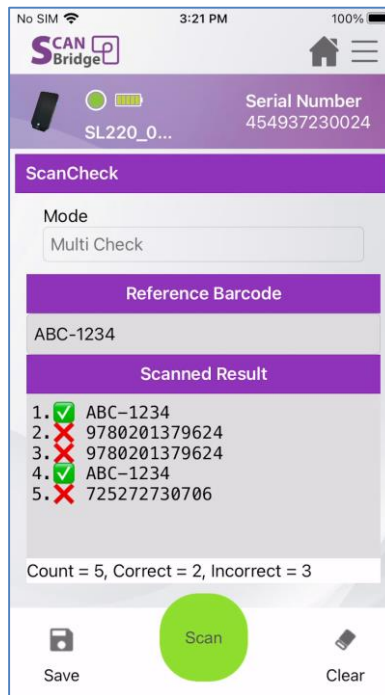


Figure 7.3.2

Addition Single Check Setting can be config through Scan Check Setting (Figure 7.2.4)

User is able to set scan result indicator with following:

- Success Beep
Beep when the read is success
- Fail Beep
Beep when the read is fail
- Success Vibration
Vibrate when the read is success

- Fail Vibration
Vibrate when the read is fail

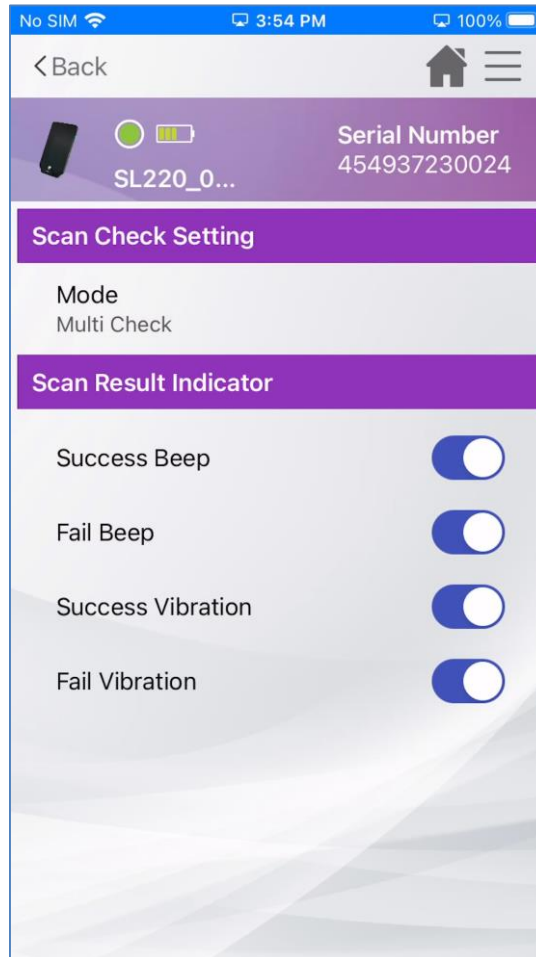


Figure 7.2.4

7.4 Scan Check – Filter Rule

ScanBridge provide utility for user to perform checks between barcodes. Single Check – Filter Rule will allow user to create filter rule from 2 options:

- **Lookup Table**

This will perform an exact match, by comparing the scanned result with the data entered in Lookup Table.

- User can add data wish to be matched in to Lookup Table by entering Filter Rules Editing under Scan Check Setting (Figure 7.4.1).
- Tap on “+” (Figure 7.4.2), and then enter the data.

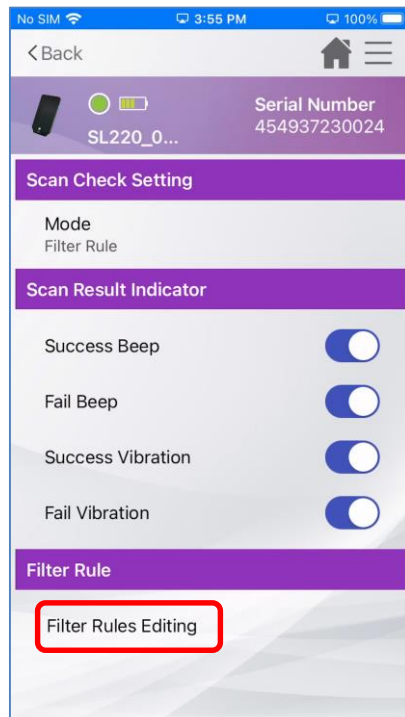


Figure 7.4.1

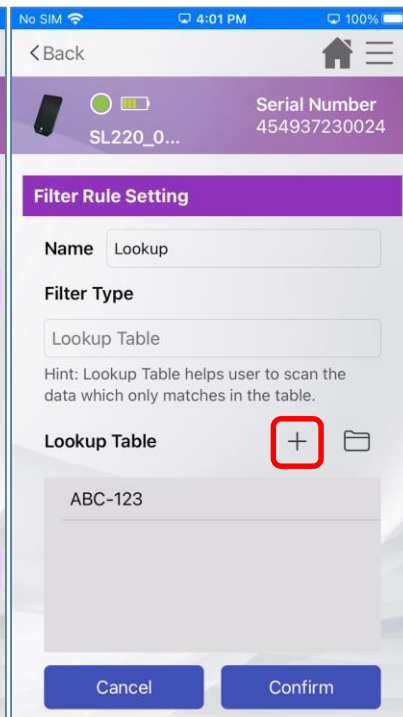


Figure 7.4.2

- User can import .txt file which contain the data to be matched in to Lookup Table by tap on the folder icon (Figure 7.4.3)
 - ◆ Note: The .txt file should follow csv structure.
Example: ABC-123,123-ABC will result adding 2 data in to lookup table.

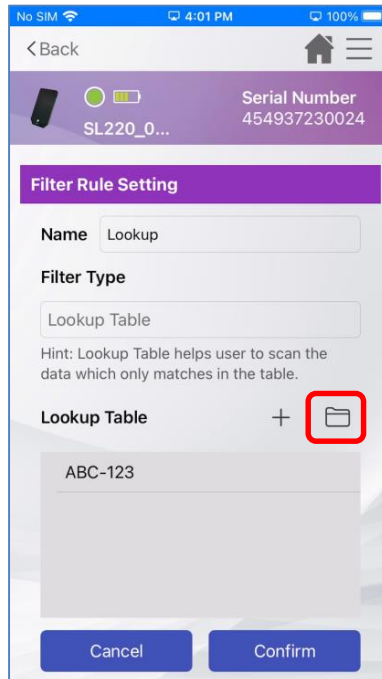


Figure 7.4.3

- **Symbology + Regular Expression**

This will perform an exact match on the barcode type of the scanned data, and then perform check if the scanned data matches the regular expression

- User will need to set the Filter Type to “Symbology + RegExp” under Filter Rule Setting (Figure 7.4.4).

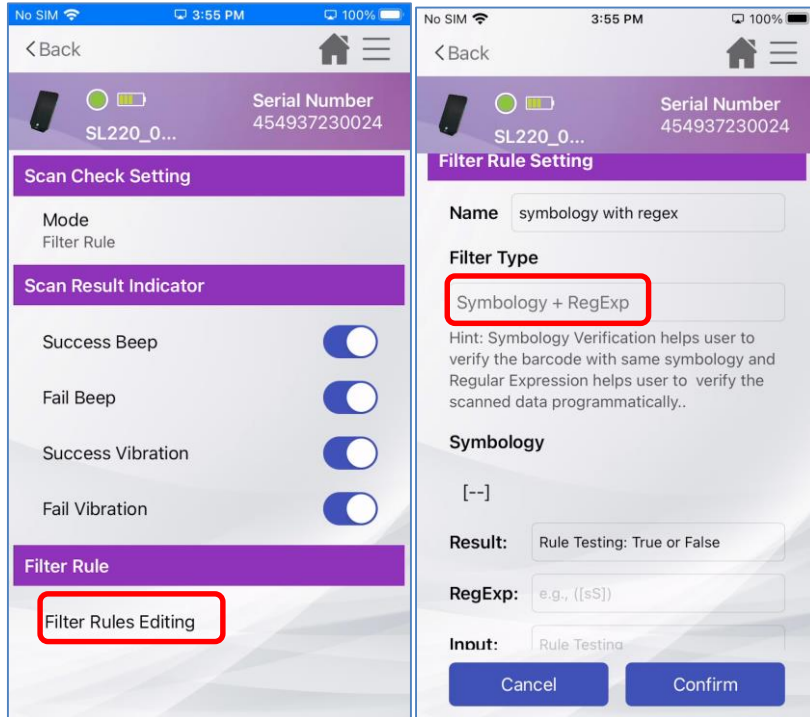


Figure 7.4.4

- To set barcode type, simply tap on [--] under Symbology (Figure 7.4.5), then select from the list shown up (Figure 7.4.6).

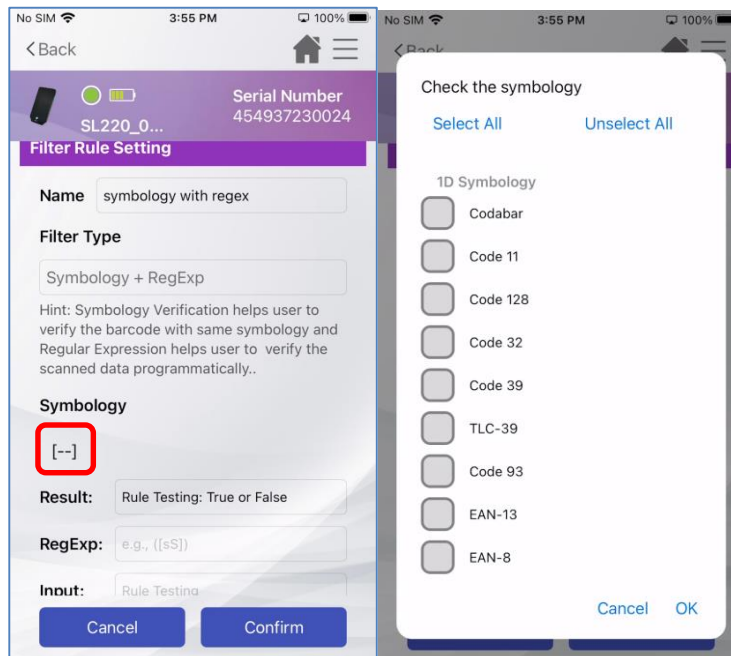


Figure 7.4.5

Figure 7.4.6

- To set regular expression, simply enter in RegExp text field. Additionally, user can use the “Input” field to run quick test. In below

example (Figure 7.4.7), it will perform partial match to scanned result which contain 'ABC', if there is a partial match will consider as match.

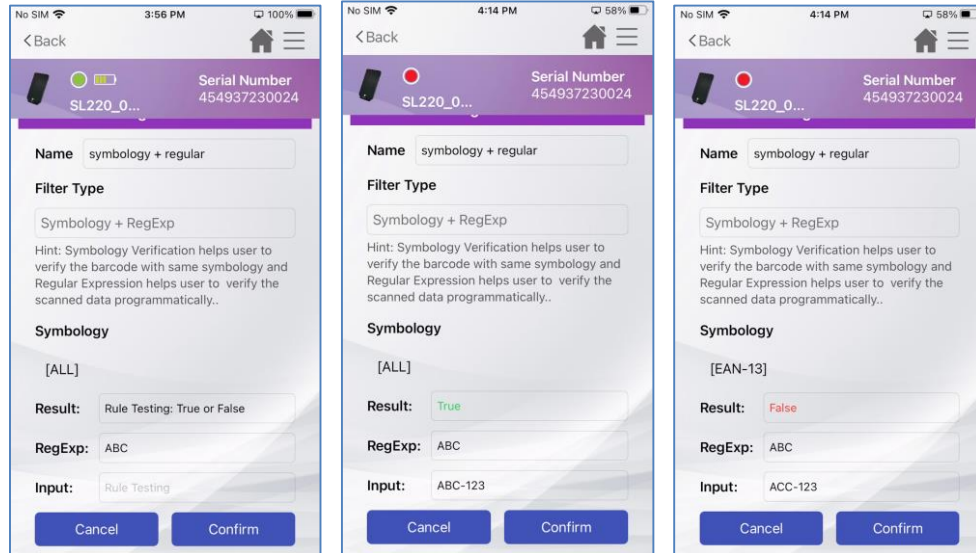


Figure 7.4.7

Chapter 8 – ScanBridge Keyboard

In industrial factory, warehouse and medical environment, it's more convenient for user to output data directly instead of typing characters one by one. "Data Wedge" is a powerful function which makes data process simple. User will be able to enable Data Wedge, and process data with ScanBridge Keyboard

8.1 Data Wedge Setting

Before starting data wedge, user need to ensure the setting is enabled (Figure 8.1.1) under the profile that is selected. (**Path:** Selected profile – Data Output Options – Enable Data Wedge. Please refer to Chapter 6.1 for profile details).

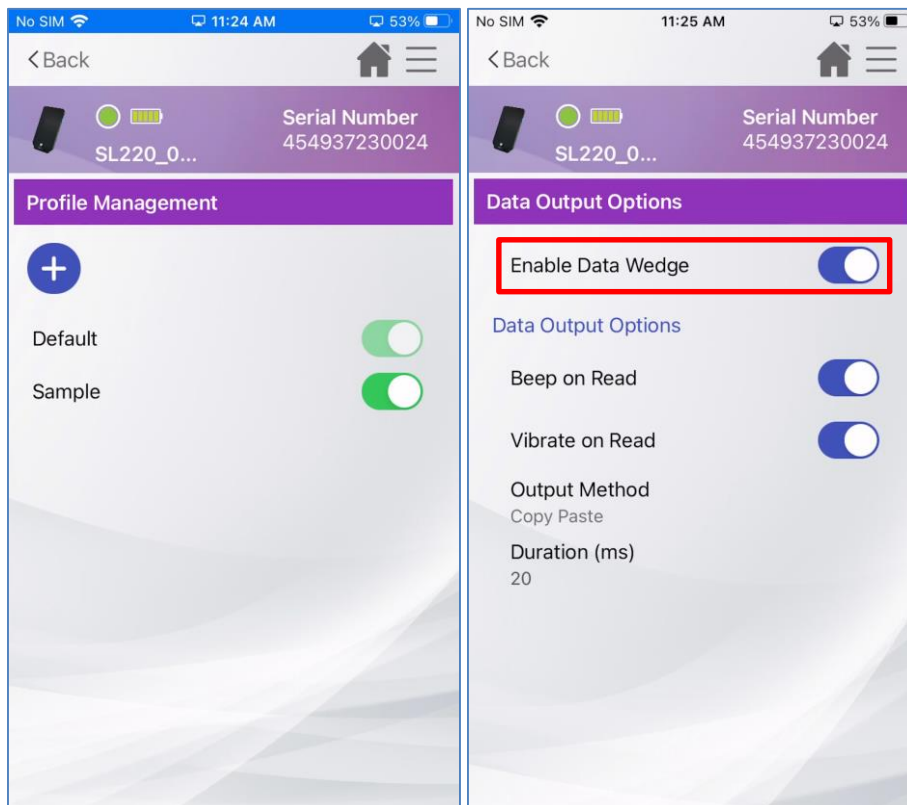


Figure 8.1.1

8.2 ScanBridge Keyboard

In data wedge, user can input scanned data to ScanBridge by scanning barcodes instead of typing (Figure 8.2.1). Besides, when switching to ScanBridge keyboard, user can input scanned data to any apps with text field, scanned result output to the enterprise app with ScanBridge Keyboard in Figure 8.2.2. The highlighted part is the ScanBridge Keyboard

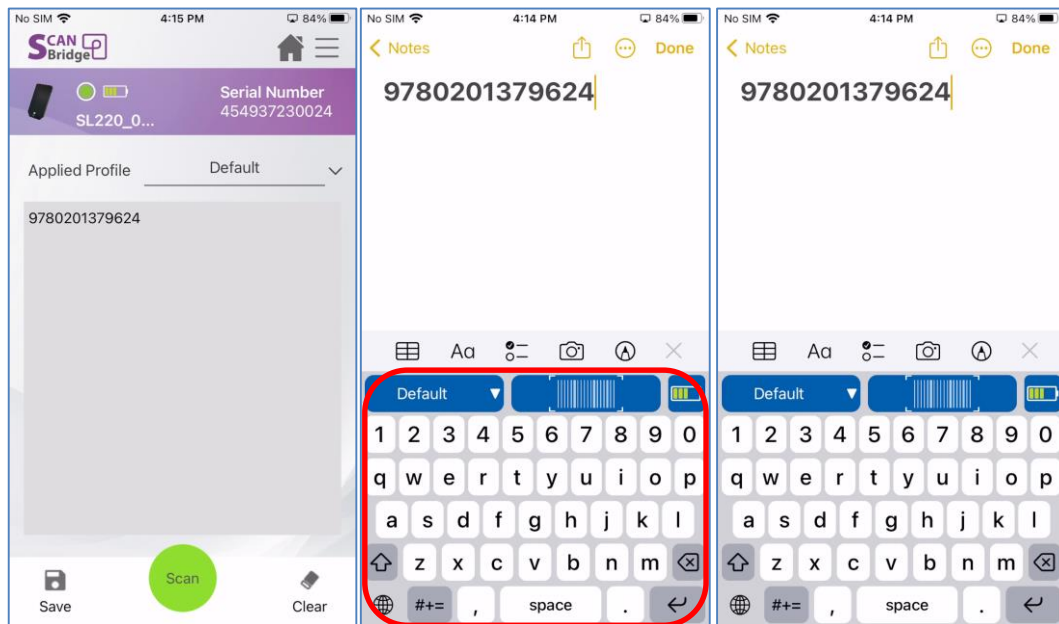


Figure 8.2.1

Figure 8.2.2

Note: Using “Notes” as enterprise app for example.

8.2.1 ScanBridge Keyboard Details

This chapter will only cover how it is used, please go over Chapter 3 on Initial Setting for ScanBridge Keyboard if needed.

There are 4 sections in ScanBridge Keyboard (Figure 8.2.1.1), description as in below:

1. Profile selector
2. Virtual scan button
3. Battery status
4. Keyboard (English)

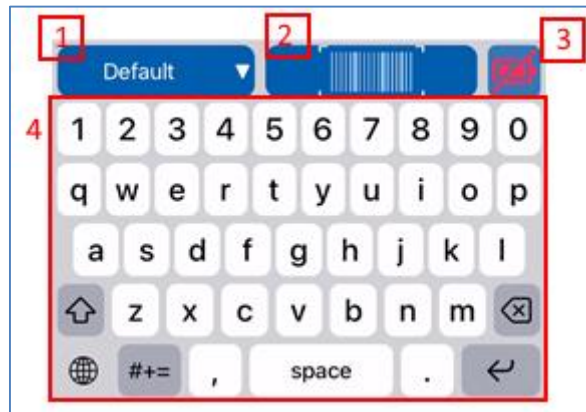


Figure 8.2.1.1

Profile Selector

User can create multiple profiles for different working situation (Refer to Chapter 6), user will be able to switch between profiles from this button (Figure 8.2.1.2).

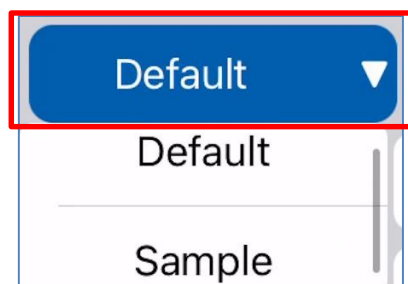


Figure 8.2.1.2

Virtual Scan Button






ScanBridge Keyboard provide a virtual button (Figure 8.2.1.3) for user to trigger the scan. It allows user to tap on screen without pressing the physical button for the scan.



Figure 8.2.1.3

Battery Status

Within ScanBridge Keyboard, it also shows current battery status of the scanner. Battery status will have different status.

Battery Status	Icon
Very Low	
Low battery	
Normal battery	
Full charged	
No Battery installed (Flashing)	

Keyboard (English)

ScanBridge Keyboard provide English keyboard as shown in Figure 8.2.1.4



Figure 8.2.1.4

Chapter 9 – Others

This chapter introduces the rest feature of ScanBridge which is not covered in the above chapters:

1. Password
2. Battery Hot Swap
2. Import/Export/Reset

9.1 Password Setting

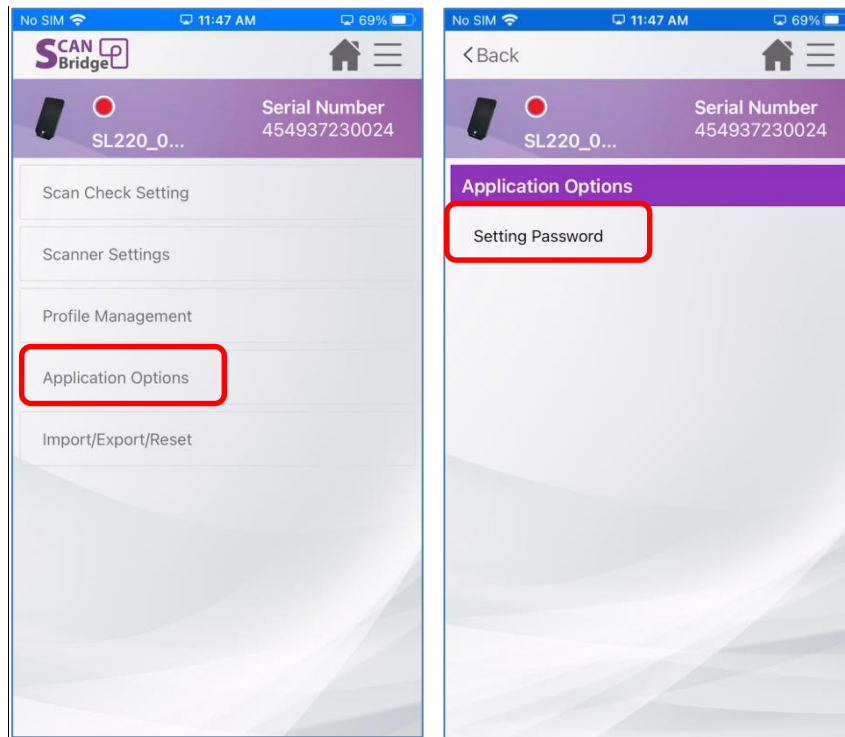


Figure 9.1.1

ScanBridge provide password setting for Admin. To prevent the user who have no right to access the system from configuring.

Password can be set through this path:

Settings → Application Options → Setting Password (Figure 9.1.1)

Once password is set, password will be required when user enter “Settings” page (Figure 9.1.2).

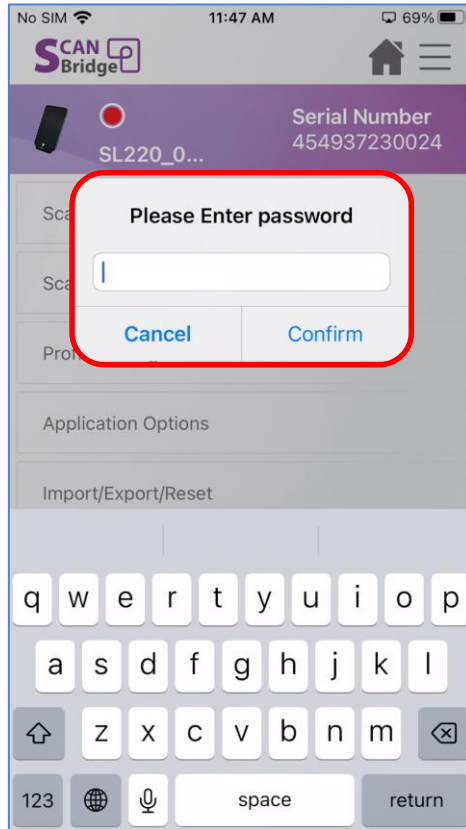


Figure 9.1.2

Remove Password

To remove password, user must enter “Setting Password”, and make sure the password field is empty, then tap on “Confirm”. (Figure 9.1.3)

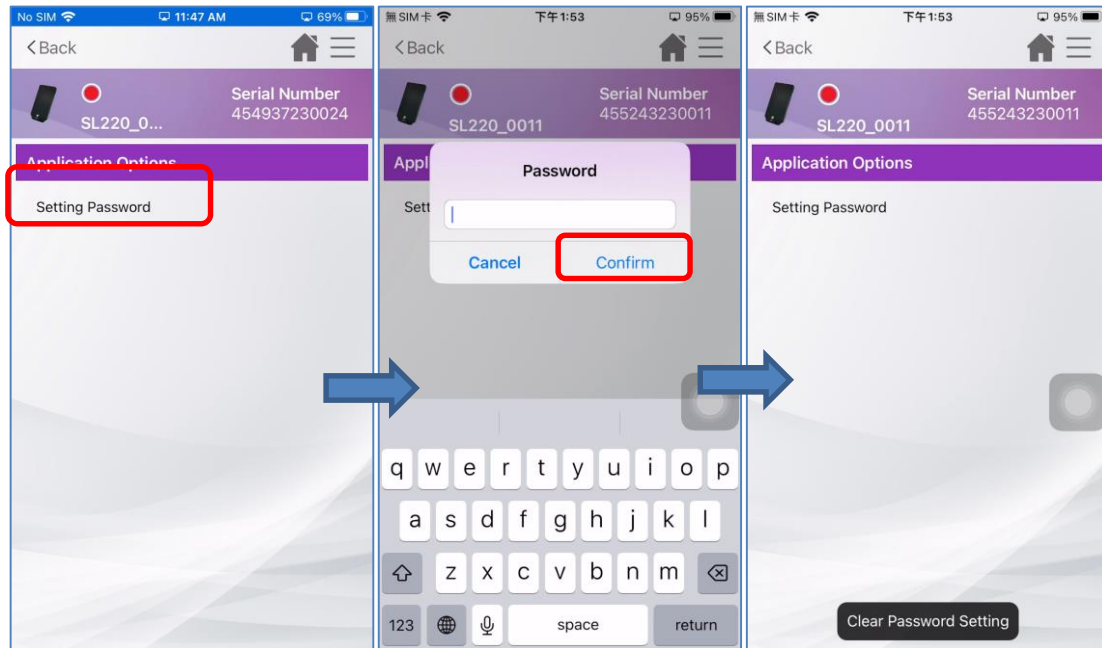


Figure 9.1.3

9.2 Battery Hot Swap

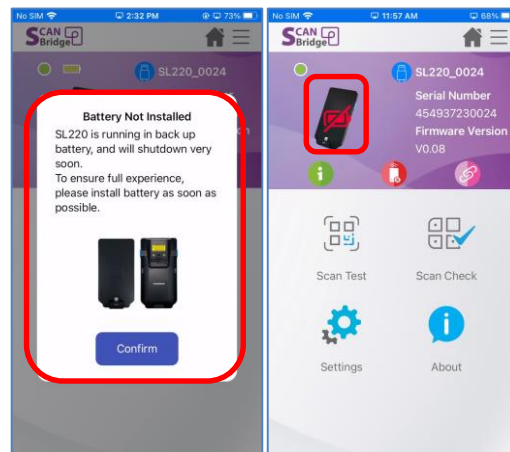


Figure 9.2.1

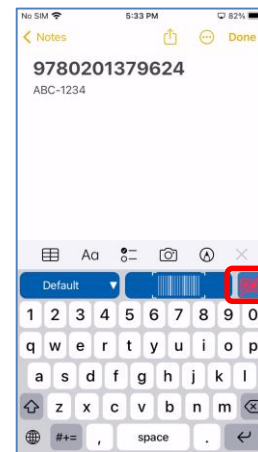


Figure 9.2.2

ScanBridge support certain device (*SL220 in Figure 9.2.1) continue to use without battery installed. It is useful when user need to change battery or batter not correct installed.

The batter hot swap will also appear while in ScanBridge Keyboard.(Figure 9.2.2

9.3 Import/ Export/ Reset

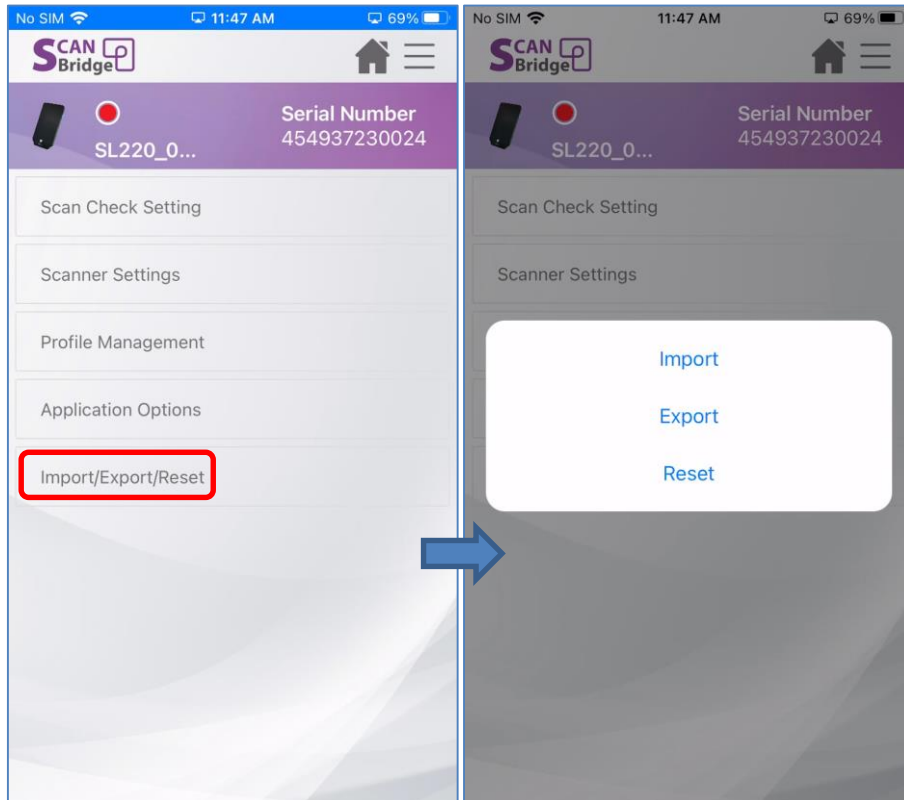


Figure 9.3.1

In Settings - “Import/Export/Reset” (Figure 9.3.1), there are three selections:

1. **Import:** To import the configuration file to ScanBridge folder. (Please export first)
2. **Export:** To export the current configuration of ScanBridge to ScanBridge (Figure 9.3.2) folder.
3. **Reset:** To configure ScanBridge to default setting.

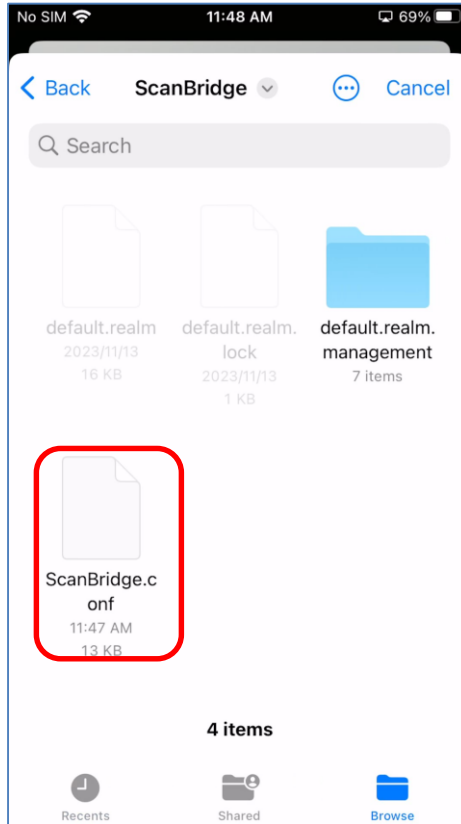


Figure 9.3.2

Export flow

ScanBridge allow user to name the config file before exporting (Figure 9.3.3). By default, the name will be “ScanBridge”, and will alert user when there is a duplicated file name (File 9.3.4).

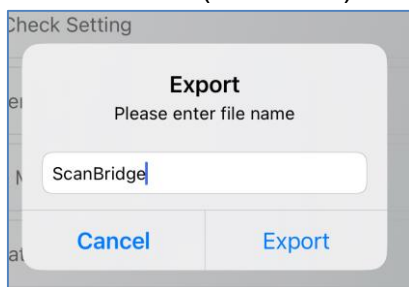


Figure 9.3.3

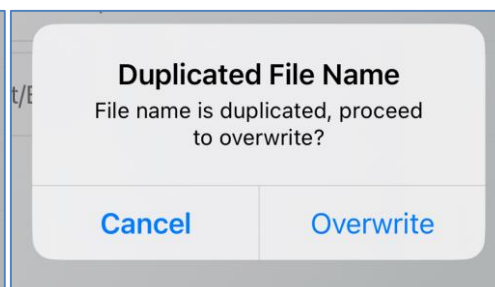


Figure 9.3.4

Chapter 10 – Q&A

Settings Below are some general questions and answers that might be helpful.

10.1 SL220

This Q&A section is only for model **SL220**.

Q	Scanner is getting disconnect to ScanBridge app while using ScanBridge Keyboard in ScanBridge App.
A	ScanBridge Keyboard have higher connection priority than ScanBridge app. Therefore, it is expected to see ScanBridge app disconnect to SL220 when ScanBridge Keyboard is triggered, then ScanBridge Keyboard will reconnect with SL220.

Q	Scanner is getting disconnect when ScanBridge is running in background or locked
A	SL220 will only connect in below conditions: <ul style="list-style-type: none"> ● When ScanBridge is activate (not in background) ● When ScanBridge Keyboard is in use

Q	Scanned data does not transmit to enterprise application
A	Please check if SL220 is well connected, and also “Enable Data Wedge” is enabled under the profile you current using.

Q	Scanner settings aren’t synced when plugin to same iOS device
A	Please check if “Auto Config Device” setting is enabled under Scanner Settings.

Q	Encounter error when updating firmware
A	Do not worry on the error, please retry the update process. Be sure to confirm the scanner is attached well to the iOS device.

Q	ScanBridge Keyboard toast is in different language
A	You can change the language by entering iOS Settings -> General -> Language & Region, then change the language wish to use to the 1 st order under Preferred Language.
Q	Set up Advance Editing in profile, but it is applying Basic Editing
A	Make sure to check if your Data Editing Type is set to “Advanced” in your profile
Q	Show Unkown symbology type while editing rule
A	ScanBridge support user to setup insert/replace/substitution with symbology type in advance setting. If user input a rule testing while editing, ScanBridge won't be able to determine symbology type. Therefore, it will show Unkown in Output Preview. If user like to see the output preview with actual symbology type, please test it with ScanTest.

Appendix

Data Editing Option	Description	Example
Prefix	Add in front of data	Data: ABC-123 Prefix: Code: Result: Code: ABC-123
Suffix	Add at the end of data	Data: ABC-123 Suffix: - Code Result: ABC-123 - Code
Find / Replace By	Find X from data and replace by Y	Data: ABC-123 Find: ABC Replace By: BCD Result: BCD -123

Table 1.1

Data Editing Option	Description	Example
Insert	Insert in to data by index	Data: ABC-123 Index: 4 Insert: 2023 Result: ABC 2023 -1234
Switch Case	Switch cases by index and its' length	Data: ABCD-123 Index: 1 Replace Length: 3 Case: Lower case Result: abc D-123
Replace	Replace by index and its' length	Data: ABCD-123 Index: 1 Content: BCD Replace Length: 4 Result: BCD -123 D is removed due to the replace length is 4
RegExp – Validation	Valid data by regular expression, and decide next action when valid a fail	
RegExp – Substitution	Substitute data by regular expression	

Table 1.2